



# VTP BEL AIR

Premium 1, 2 & 3 Bedroom Homes

PLAN BOOKLET

TOWNSHIP CODENAME BLUE WATERS

100+ ACRES

# WOW

LIVING

TOWNSHIP CODENAME

## BLUE WATERS

BANER NEXT, MAHALUNGE

# #UPGRADE TO THE VTP REALTY EXPERIENCE



**BETTER DESIGN**



**BETTER BUILD**



**BETTER CARE**

# VTP REALTY HOMES

## SUPER ADVANTAGES

### Larger rooms in the same carpet area, thanks to MLA Concept (Maximum Liveable Area)

Every unit is designed from our "MLA-Maximum Livable Area" Philosophy where you get bigger room sizes within the same carpet area. Hence you pay only for the area that you live in.

**Design #Incomparable**

---

### Super premium specifications at unbeatable price as compared to other projects in the region

- Veneer finish main door
- Large sized marble finish glazed vitrified tiles
- Premium emulsion paint for internal walls
- Premium CP & sanitaryware fittings
- Large windows with high quality frames

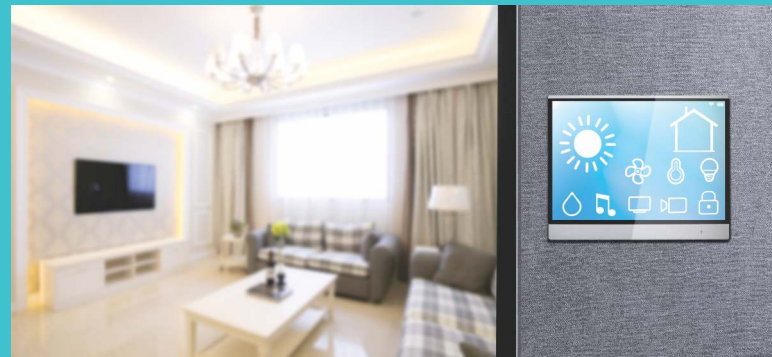
And much more...

**Specifications #Incomparable**

### Best-in-class superlative features in your smart home

- Lights control • Fan control • AC control
- Geyser control • Featherlite touch pad switches
- Compatible with Alexa voice command
- Motion sensor lights in all baths

**SmartHomes #Incomparable**



All the project plans have been compiled together in one booklet for your easy reference.

Please go through the same along with the respective areas.

This will make your apartment selection much easier!

# MASTER PLAN

## TOWNSHIP CODENAME BLUE WATERS



\*All projects are mentioned here are indicative purpose only



**CELEBRATE  
VTP BEL AIR –  
THE FLOW  
OF LIFE**

## AMENITIES

- Club house
- Multipurpose hall
- Gymnasium
- Indoor games room
- Two Swimming pools (One infinity pool another leisure pool)
- Party lawn
- Outdoor fitness area
- Cricket Net
- Lawn Tennis
- Children's play area
- Central podium
- Activity lawn with stage
- Skating rink
- Senior citizen plaza
- Multipurpose court
- Acupressure path way
- Separate eat out area

## SPECIFICATIONS

### Flooring

- Living, Dining, Kitchen - Glazed vitrified Tiles (800x800mm)
- All Bedrooms - Glazed vitrified Tiles (600x600mm)
- Dry Balcony & Terraces- Anti-skid ceramic Tiles

### Toilets

- CP fittings – Jaquar/ Cera equivalent
- Flooring – Anti-skid tiles
- Designer Decorative dado Tiles up-to 7 feet
- Solar connection in master toilet
- Geysers point in other toilet

### Kitchen

- Granite Kitchen platform
- S.S. Sink
- Ceramic/glazed tiles above kitchen platform 2ft
- Provision for water purifier

### Doors & Windows

- Main door – Decorative entrance door with Veneer
- Internal doors – Laminated Flush door
- Laminated flush doors in Wash Rooms
- Toilet door frames in granite
- Powder coated aluminum sliding windows with mosquito net
- S.S. glass railing to terrace

### Electrical fittings

- Switches – Anchor/ legrand equivalent modular switches.
- Concealed copper wiring with M.C.B
- Adequate electric points with TV & Telephone points in living room, Master bed room
- AC points in all bedrooms
- 100% DG Back-up for lifts & Common area
- Provision for inverter

**Plumbing** - Concealed anti-corrosive plumbing

### Wall Finishes

- Plastic emulsion paint for internal wall
- Exterior – Superior quality Texture/apex/ protective paint

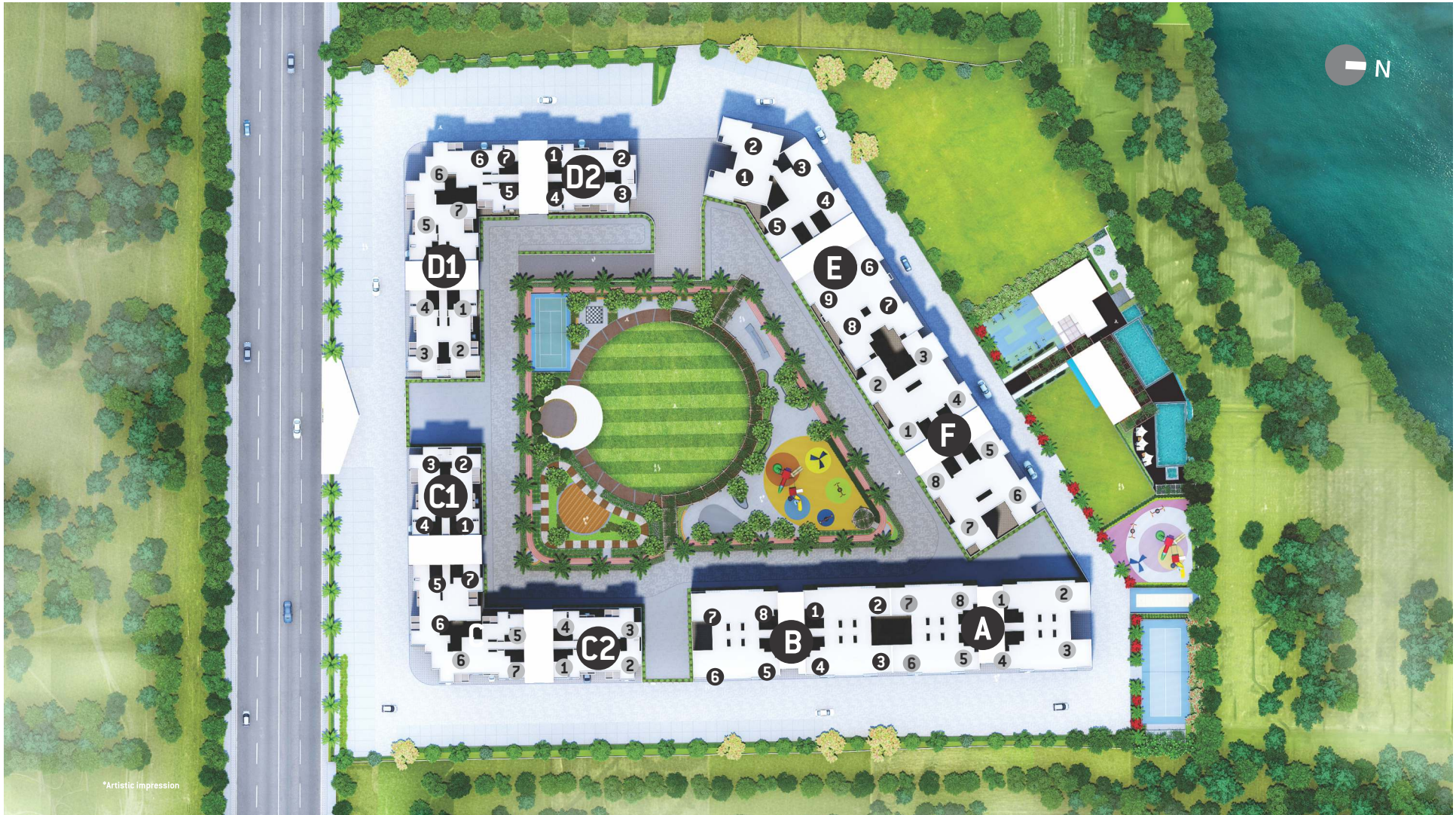
### Automation

- Digital lock for main door
- Featherlike touch pad switches in all rooms
- Motion sensor lights in all baths
- Provision for lights control (Mood Lighting),
- Provision for AC, fan & geyser control via a mobile app
- Also compatible with Alexa\*\* voice command
- 3-tier security system with video door connected to the smart phone

**Structure** - Earthquake resistant RCC structure

# LAYOUT PLAN

VTP  
**BELAIR**





Ask our sales advisor for the currently available inventory.

FLAT NO	TYPE	Carpet Area		Enclosed Balcony		Terrace Area		Total Carpet area	
		in sq.m.	in sq.ft.	in sq.m.	in sq.ft.	in sq.m.	in sq.ft.	in sq.m.	in sq.ft.
101,301,501,701,901,1101,1301,1501,1701,1901,2101,2301	2BHK	47.02	506.12	9.23	99.35	3.14	33.80	59.39	639.27
102,302,502,702,902,1102,1302,1502,1702,1902,2102,2302	2BHK	47.02	506.12	9.23	99.35	3.14	33.80	59.39	639.27
103,303,503,703,903,1103,1303,1503,1703,1903,2103,2303	2BHK	47.02	506.12	9.23	99.35	3.14	33.80	59.39	639.27
104,304,504,704,904,1104,1304,1504,1704,1904,2104,2304	2BHK	47.02	506.12	9.23	99.35	3.14	33.80	59.39	639.27
105,305,505,705,905,1105,1305,1505,1705,1905,2105,2305	2BHK	47.02	506.12	9.23	99.35	3.14	33.80	59.39	639.27
106,306,506,706,906,1106,1306,1506,1706,1906,2106,2306	2BHK	47.02	506.12	9.23	99.35	3.14	33.80	59.39	639.27
107,307,507,707,907,1107,1307,1507,1707,1907,2107,2307	2BHK	47.02	506.12	9.23	99.35	3.14	33.80	59.39	639.27
108,308,508,708,908,1108,1308,1508,1708,1908,2108,2308	2BHK	47.02	506.12	9.23	99.35	3.14	33.80	59.39	639.27

VTP BEL AIR

A - BUILDING ODD FLOOR PLAN Floor Nos. - 1, 3, 5, 7, 9, 11, 13, 15, 17, 19, 21, 23



The dimensions mentioned in sq.m. are valid and dimensions mentioned in sq. ft. are for information only. Conversion table is; 1 sq.m. = 10.764 sq.ft. & 1 m. = 3.28 ft.





Ask our sales advisor for the currently available inventory.

FLAT NO	TYPE	Carpet Area		Enclosed Balcony		Terrace Area		Total Carpet area	
		in sq.m.	in sq.ft.	in sq.m.	in sq.ft.	in sq.m.	in sq.ft.	in sq.m.	in sq.ft.
201,401,601,801,1001,1201,1401,1601,1801,2001,2201	2BHK	47.02	506.12	9.23	99.35	3.14	33.80	59.39	639.27
202,402,602,802,1002,1202,1402,1602,1802,2002,2202	2BHK	47.02	506.12	9.23	99.35	3.14	33.80	59.39	639.27
203,403,603,803,1003,1203,1403,1603,1803,2003,2203	2BHK	47.02	506.12	9.23	99.35	3.14	33.80	59.39	639.27
204,404,604,804,1004,1204,1404,1604,1804,2004,2204	2BHK	47.02	506.12	9.23	99.35	3.14	33.80	59.39	639.27
205,405,605,805,1005,1205,1405,1605,1805,2005,2205	2BHK	47.02	506.12	9.23	99.35	3.14	33.80	59.39	639.27
206,406,606,806,1006,1206,1406,1606,1806,2006,2206	2BHK	47.02	506.12	9.23	99.35	3.14	33.80	59.39	639.27
207,407,607,807,1007,1207,1407,1607,1807,2007,2207	2BHK	47.02	506.12	9.23	99.35	3.14	33.80	59.39	639.27
208,408,608,808,1008,1208,1408,1608,1808,2008,2208	2BHK	47.02	506.12	9.23	99.35	3.14	33.80	59.39	639.27

**VTP BEL AIR**

**A - BUILDING EVEN FLOOR PLAN Floor Nos. - 2, 4, 6, 8, 10, 12, 14, 16, 18, 20, 22**



The dimensions mentioned in sq.m. are valid and dimensions mentioned in sq. ft. are for information only. Conversion table is; 1 sq.m. = 10.764 sq.ft. & 1 m. = 3.28 ft.



Ask our sales advisor for the currently available inventory.

## VTP BEL AIR

### B - BUILDING

#### ODD FLOOR PLAN

Floor Nos. - 1, 3, 5, 7, 9, 11, 13, 15, 17, 19, 21, 23

FLAT NO.	TYPE	BASIC CARPET		ENCL. BALCONY		TERRACE		TOTAL CARPET	
		SQ.M.	SQ.FT.	SQ.M.	SQ.FT.	SQ.M.	SQ.FT.	SQ.M.	SQ.FT.
101, 301, 501, 701, 901, 1101, 1301, 1501, 1701, 1901, 2101, 2301	2BHK	47.06	507	9.2	99	3.14	34	59.4	639
102, 302, 502, 702, 902, 1102, 1302, 1502, 1702, 1902, 2102, 2301	2BHK	47.06	507	9.2	99	3.14	34	59.4	639
103, 303, 503, 703, 903, 1103, 1303, 1503, 1703, 1903, 2103, 2301	2BHK	47.06	507	9.2	99	3.14	34	59.4	639
104, 304, 504, 704, 904, 1104, 1304, 1504, 1704, 1904, 2104, 2301	2BHK	47.06	507	9.2	99	3.14	34	59.4	639
105, 305, 505, 705, 905, 1105, 1305, 1505, 1705, 1905, 2105, 2301	2BHK	47.06	507	9.2	99	3.14	34	59.4	639
106, 306, 506, 706, 906, 1106, 1306, 1506, 1706, 1906, 2106, 2301	2BHK	47.06	507	9.2	99	3.14	34	59.4	639
107, 307, 507, 707, 907, 1107, 1307, 1507, 1707, 1907, 2107, 2301	2BHK	47.06	507	9.2	99	3.14	34	59.4	639
108, 308, 508, 708, 908, 1108, 1308, 1508, 1708, 1908, 2108, 2301	2BHK	47.06	507	9.2	99	3.14	34	59.4	639

The dimensions mentioned in sq.m. are valid and dimensions mentioned in sq.ft. are for information only. Conversion table is; 1 sq.m. = 10.764 sq.ft. & 1 m. = 3.28 ft.





Ask our sales advisor for the currently available inventory.

## VTP BEL AIR

### B - BUILDING

#### EVEN FLOOR PLAN

Floor Nos. - 2, 4, 6, 8, 10, 12, 14, 16, 18, 20, 22



FLAT NO.	TYPE	BASIC CARPET		ENCL. BALCONY		TERRACE		TOTAL CARPET	
		SQ.M.	SQ.FT.	SQ.M.	SQ.FT.	SQ.M.	SQ.FT.	SQ.M.	SQ.FT.
201, 401, 601, 801, 1001, 1201, 1401, 1601, 1801, 2001, 2201	2BHK	47.06	507	9.2	99	3.14	34	59.4	639
202, 402, 602, 802, 1002, 1202, 1402, 1602, 1802, 2002, 2202	2BHK	47.06	507	9.2	99	3.14	34	59.4	639
203, 403, 603, 803, 1003, 1203, 1403, 1603, 1803, 2003, 2203	2BHK	47.06	507	9.2	99	3.14	34	59.4	639
204, 404, 604, 804, 1004, 1204, 1404, 1604, 1804, 2004, 2204	2BHK	47.06	507	9.2	99	3.14	34	59.4	639
205, 405, 605, 805, 1005, 1205, 1405, 1605, 1805, 2005, 2205	2BHK	47.06	507	9.2	99	3.14	34	59.4	639
206, 406, 606, 806, 1006, 1206, 1406, 1606, 1806, 2006, 2206	2BHK	47.06	507	9.2	99	3.14	34	59.4	639
207, 407, 607, 807, 1007, 1207, 1407, 1607, 1807, 2007, 2207	2BHK	47.06	507	9.2	99	3.14	34	59.4	639
208, 408, 608, 808, 1008, 1208, 1408, 1608, 1808, 2008, 2208	2BHK	47.06	507	9.2	99	3.14	34	59.4	639

The dimensions mentioned in sq.m. are valid and dimensions mentioned in sq.ft. are for information only. Conversion table is; 1 sq.m. = 10.764 sq.ft. & 1 m. = 3.28 ft.

# VTP BEL AIR

## C1 - BUILDING

### ODD FLOOR PLAN

Floor Nos. - 1, 3, 5, 7, 9, 11, 13, 15, 17, 19, 21, 23

FLAT NO.	TYPE	CARPET AREA		ENCLOSED BALCONY		TERRACE AREA		TOTAL CARPET AREA	
		IN SQ.M.	IN SQ.FT.	IN SQ.M.	IN SQ.FT.	IN SQ.M.	IN SQ.FT.	IN SQ.M.	IN SQ.FT.
C1-101,301,501,701,901,1101,1301,1501,1701,1901,2101,2301	1BHK	29.15	314	7.38	79	2.78	30	39.31	423
C1-102,302,502,702,902,1102,1302,1502,1702,1902,2102,2301	2BHK	45.07	485	7.85	84	2.78	30	55.70	600
C1-103,303,503,703,903,1103,1303,1503,1703,1903,2103,2301	2BHK	45.07	485	7.85	84	2.78	30	55.70	600
C1-104,304,504,704,904,1104,1304,1504,1704,1904,2104,2301	1BHK	29.15	314	7.38	79	2.78	30	39.31	423
C1-105,305,505,705,905,1105,1305,1505,1705,1905,2105,2301	1BHK	29.15	314	7.38	79	2.78	30	39.31	423
C1-106,306,506,706,906,1106,1306,1506,1706,1906,2106,2301	2BHK	48.52	522	4.42	48	2.78	30	55.72	600
C1-307,507,707,907,1107,1307,1707	Smart 3BHK	57.45	618	13.16	142	3.02	33	73.63	793

Ask our sales advisor for the currently available inventory.



The dimensions mentioned in sq.m. are valid and dimensions mentioned in sq. ft. are for information only. Conversion table is; 1 sq.m. = 10.764 sq.ft. & 1 m. = 3.28 ft.



# VTP BEL AIR

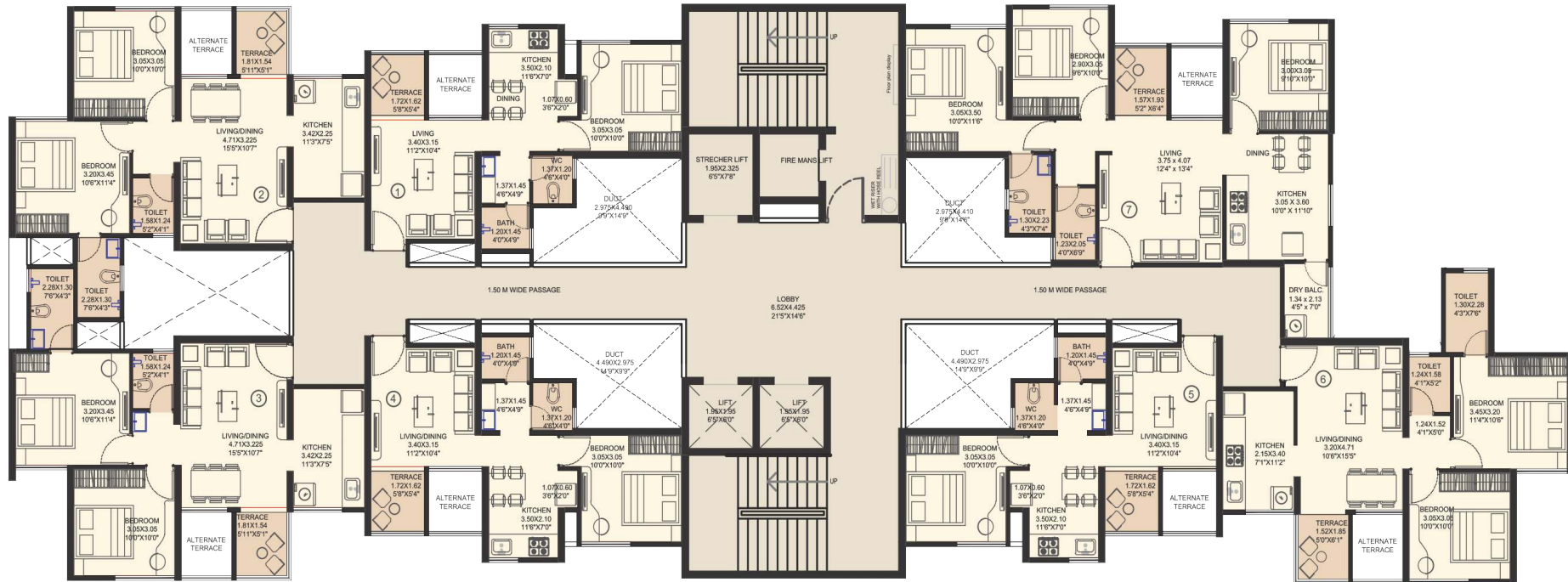
## C1 - BUILDING

### EVEN FLOOR PLAN

Floor Nos. - 2, 4, 6, 8, 10, 12, 14, 16, 18, 20, 22

FLAT NO.	TYPE	CARPET AREA		ENCLOSED BALCONY		TERRACE AREA		TOTAL CARPET AREA	
		IN SQ.M.	IN SQ.FT.	IN SQ.M.	IN SQ.FT.	IN SQ.M.	IN SQ.FT.	IN SQ.M.	IN SQ.FT.
C1-201,401,601,801,901,1001,1201,1401,1601,1801,2001,2201	1BHK	29.15	314	7.38	79	2.78	30	39.31	423
C1-202,402,602,802,902,1002,1202,1402,1602,1802,2002,2202	2BHK	45.07	485	7.85	84	2.78	30	55.70	600
C1-203,403,603,803,903,1003,1203,1403,1603,1803,2003,2203	2BHK	45.07	485	7.85	84	2.78	30	55.70	600
C1-204,404,604,804,904,1004,1204,1404,1604,1804,2004,2204	1BHK	29.15	314	7.38	79	2.78	30	39.31	423
C1-205,405,605,805,905,1005,1205,1405,1605,1805,2005,2205	1BHK	29.15	314	7.38	79	2.78	30	39.31	423
C1-206,406,606,806,906,1006,1206,1406,1606,1806,2006,2206	2BHK	48.52	522	4.42	48	2.78	30	55.72	600
C1-407,607,907,1007,1207,1607,2007	Smart 3BHK	57.45	618	13.16	142	3.02	33	73.63	793

Ask our sales advisor for the currently available inventory.



The dimensions mentioned in sq.m. are valid and dimensions mentioned in sq. ft. are for information only. Conversion table is; 1 sq.m. = 10.764 sq.ft. & 1 m. = 3.28 ft.



# VTP BEL AIR

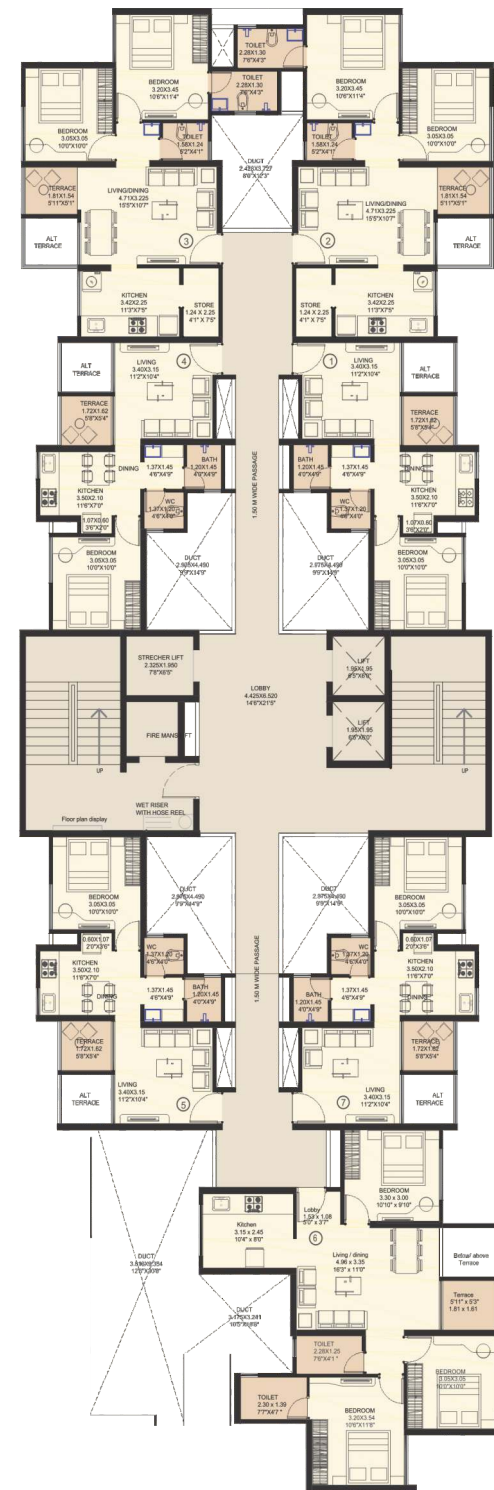
## C2 - BUILDING

### ODD FLOOR PLAN

Floor Nos. - 1, 3, 5, 7, 9, 11, 13, 15, 17, 19, 21, 23

FLAT NO.	TYPE	CARPET AREA		ENCLOSED BALCONY		TERRACE AREA		TOTAL CARPET AREA	
		IN SQ.M.	IN SQ.FT.	IN SQ.M.	IN SQ.FT.	IN SQ.M.	IN SQ.FT.	IN SQ.M.	IN SQ.FT.
C2-101,301,501,701,901,1101,1301,1501,1701,1901,2101,2301	1BHK	29.15	314	7.38	79	2.78	30	39.31	423
C2-102,302,502,702,902,1102,1302,1502,1702,1902,2102,2301	2BHK	49.15	529	6.89	74	2.78	30	58.82	633
C2-103,303,503,703,903,1103,1303,1503,1703,1903,2103,2301	2BHK	49.15	529	6.89	74	2.78	30	58.82	633
C2-104,304,504,704,904,1104,1304,1504,1704,1904,2104,2301	1BHK	29.15	314	7.38	79	2.78	30	39.31	423
C2-105,305,505,705,905,1105,1305,1505,1705,1905,2105,2301	1BHK	29.15	314	7.38	79	2.78	30	39.31	423
C2-106,306,506,706,906,1106,1306,1506,1706,1906,2106,2301	Smart 3BHK	59.32	639	8.73	94	2.92	31	70.97	764
C2-107,307,507,707,907,1107,1307,1507,1707,1907,2107,2301	1BHK	29.15	314	7.38	79	2.78	30	39.31	423

Ask our sales advisor for the currently available inventory.



The dimensions mentioned in sq.m. are valid and dimensions mentioned in sq. ft. are for information only. Conversion table is; 1 sq.m. = 10.764 sq.ft. & 1 m. = 3.28 ft.

# VTP BEL AIR

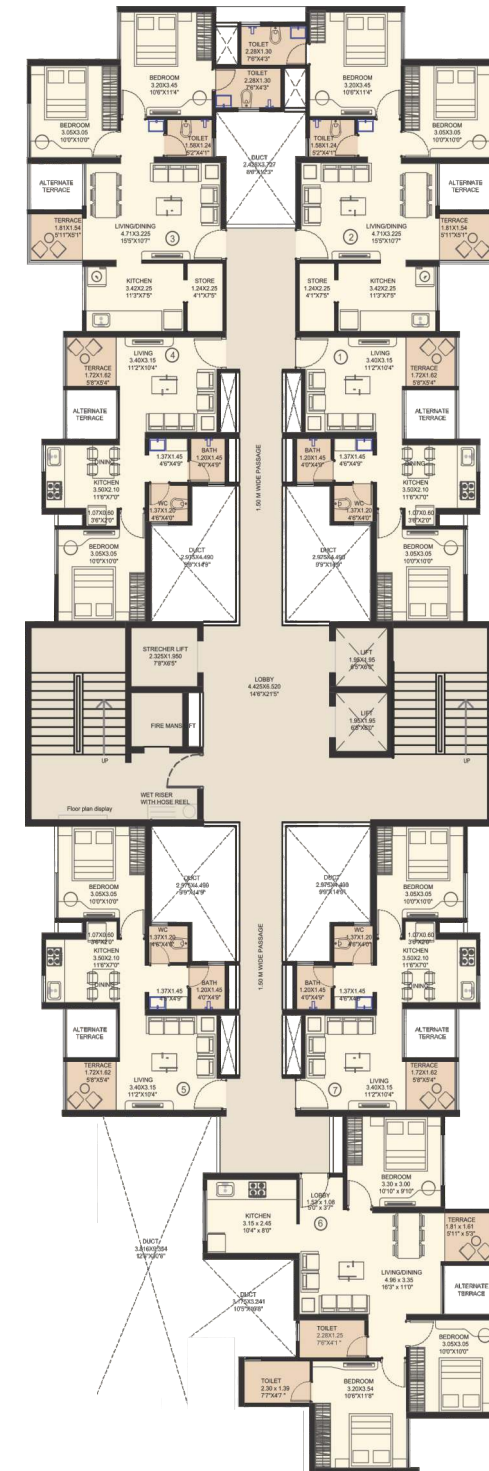
## C2 - BUILDING

### EVEN FLOOR PLAN

Floor Nos. - 2, 4, 6, 8, 10, 12, 14, 16, 18, 20, 22

FLAT NO.	TYPE	CARPET AREA		ENCLOSED BALCONY		TERRACE AREA		TOTAL CARPET AREA	
		IN SQ.M.	IN SQ.FT.	IN SQ.M.	IN SQ.FT.	IN SQ.M.	IN SQ.FT.	IN SQ.M.	IN SQ.FT.
C2-201,401,601,801,901,1001,1201,1401,1601,1801,2001,2201	1BHK	29.15	314	7.38	79	2.78	30	39.31	423
C2-202,402,602,802,902,1002,1202,1402,1602,1802,2002,2202	2BHK	49.15	529	6.89	74	2.78	30	58.82	633
C2-203,403,603,803,903,1003,1203,1403,1603,1803,2003,2203	2BHK	49.15	529	6.89	74	2.78	30	58.82	633
C2-204,404,604,804,904,1004,1204,1404,1604,1804,2004,2204	1BHK	29.15	314	7.38	79	2.78	30	39.31	423
C2-205,405,605,805,905,1005,1205,1405,1605,1805,2005,2205	1BHK	29.15	314	7.38	79	2.78	30	39.31	423
C2-206,406,606,806,906,1006,1206,1406,1606,1806,2006,2206	Smart 3BHK	59.32	639	8.73	94	2.92	31	70.97	764
C2-207,407,607,807,907,1007,1207,1407,1607,1807,2007,2207	1BHK	29.15	314	7.38	79	2.78	30	39.31	423

Ask our sales advisor for the currently available inventory.



The dimensions mentioned in sq.m. are valid and dimensions mentioned in sq. ft. are for information only. Conversion table is; 1 sq.m. = 10.764 sq.ft. & 1 m. = 3.28 ft.

# VTP BEL AIR

## D1 - BUILDING

### ODD FLOOR PLAN

Floor Nos. - 1, 3, 5, 7, 9, 11, 13, 15, 17, 19, 21, 23

FLAT NO.	TYPE	CARPET AREA		ENCLOSED BALCONY		TERRACE AREA		TOTAL CARPET AREA	
		IN SQ.M.	IN SQ.FT.	IN SQ.M.	IN SQ.FT.	IN SQ.M.	IN SQ.FT.	IN SQ.M.	IN SQ.FT.
D1-1501,1901	1BHK	29.15	314	7.38	79	2.78	30	39.31	423
D1-102,302,502,702,902,1102,1302,1502,1702,1902,2102, 2301	2BHK	45.07	485	7.85	84	2.78	30	55.70	600
D1-103,303,503,703,903,1103,1303,1503,1703,1903,2103, 2301	2BHK	45.07	485	7.85	84	2.78	30	55.70	600
D1-106,306,506,706,906,1106,1306,1506,1706,1906,2106, 2301	2BHK	48.52	522	4.42	48	2.78	30	55.72	600
D1-107,307,907,1107,2107	Smart 3BHK	57.45	618	13.16	142	3.02	33	73.63	793

Ask our sales advisor for the currently available inventory.



The dimensions mentioned in sq.m. are valid and dimensions mentioned in sq. ft. are for information only. Conversion table is; 1 sq.m. = 10.764 sq.ft. & 1 m. = 3.28 ft.



# VTP BEL AIR

## D1 - BUILDING

### EVEN FLOOR PLAN

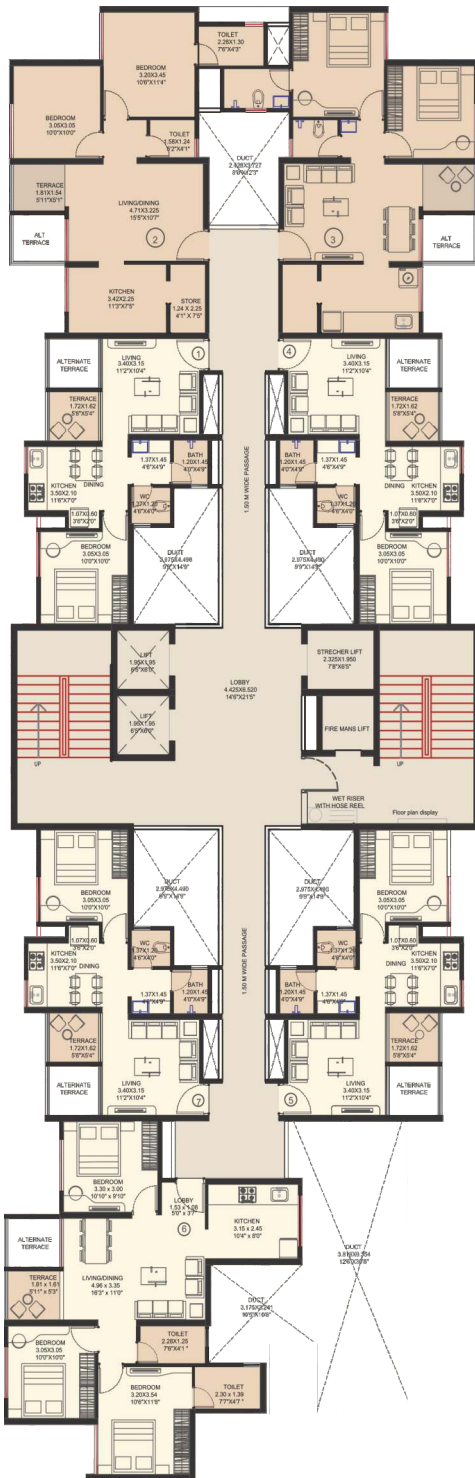
Floor Nos. - 2, 4, 6, 8, 10, 12, 14, 16, 18, 20, 22

FLAT NO.	TYPE	CARPET AREA		ENCLOSED BALCONY		TERRACE AREA		TOTAL CARPET AREA	
		IN SQ.M.	IN SQ.FT.	IN SQ.M.	IN SQ.FT.	IN SQ.M.	IN SQ.FT.	IN SQ.M.	IN SQ.FT.
D1-201,401,601,801,1001,1201,1401,1601,1801,2001,2201	1BHK	29.15	314	7.38	79	2.78	30	39.31	423
D1-202,402,602,802,1002,1202,1402,1602,1802,2002,2202	2BHK	45.07	485	7.85	84	2.78	30	55.70	600
D1-203,403,603,803,1003,1203,1403,1603,1803,2003,2203	2BHK	45.07	485	7.85	84	2.78	30	55.70	600
D1-204,404,604,804,1004,1204,1404,1604,1804,2004,2204	1BHK	29.15	314	7.38	79	2.78	30	39.31	423
D1-205,405,605,805,1005,1205,1405,1605,1805,2005,2205	1BHK	29.15	314	7.38	79	2.78	30	39.31	423
D1-206,406,606,806,1006,1206,1406,1606,1806,2006,2206	2BHK	48.52	522	4.42	48	2.78	30	55.72	600
D1-207,407,607,807,1007,1207,1407,1607,1807,2007,2207	Smart 3BHK	57.45	618	13.16	142	3.02	33	73.63	793

Ask our sales advisor for the currently available inventory.



The dimensions mentioned in sq.m. are valid and dimensions mentioned in sq. ft. are for information only. Conversion table is; 1 sq.m. = 10.764 sq.ft. & 1 m. = 3.28 ft.



# VTP BEL AIR

## D2 - BUILDING

### ODD FLOOR PLAN

Floor Nos. - 1, 3, 5, 7, 9, 11, 13, 15, 17, 19, 21, 23

FLAT NO.	TYPE	CARPET AREA		ENCLOSED BALCONY		TERRACE AREA		TOTAL CARPET AREA	
		IN SQ.M.	IN SQ.FT.	IN SQ.M.	IN SQ.FT.	IN SQ.M.	IN SQ.FT.	IN SQ.M.	IN SQ.FT.
D2-101,301,501,701,901,1101,1301,1501,1701,1901,2101,2301	1BHK	29.15	314	7.38	79	2.78	30	39.31	423
D2-102,302,502,702,902,1102,1302,1502,1702,1902,2102,2302	2BHK	49.15	529	6.89	74	2.78	30	58.82	633
D2-103,303,503,703,903,1103,1303,1503,1703,1903,2103,2303	2BHK	49.15	529	6.89	74	2.78	30	58.82	633
D2-104,304,504,704,904,1104,1304,1504,1704,1904,2104,2304	1BHK	29.15	314	7.38	79	2.78	30	39.31	423
D2-105,305,505,705,905,1105,1305,1505,1705,1905,2105,2305	1BHK	29.15	314	7.38	79	2.78	30	39.31	423
D2-106,306,506,706,906,1106,1306,1506,1706,1906,2106,2306	Smart 3BHK	59.32	639	8.73	94	2.92	31	70.97	764
D2-107,307,507,707,907,1107,1307,1507,1707,1907,2107,2307	1BHK	29.15	314	7.38	79	2.78	30	39.31	423

Ask our sales advisor for the currently available inventory.



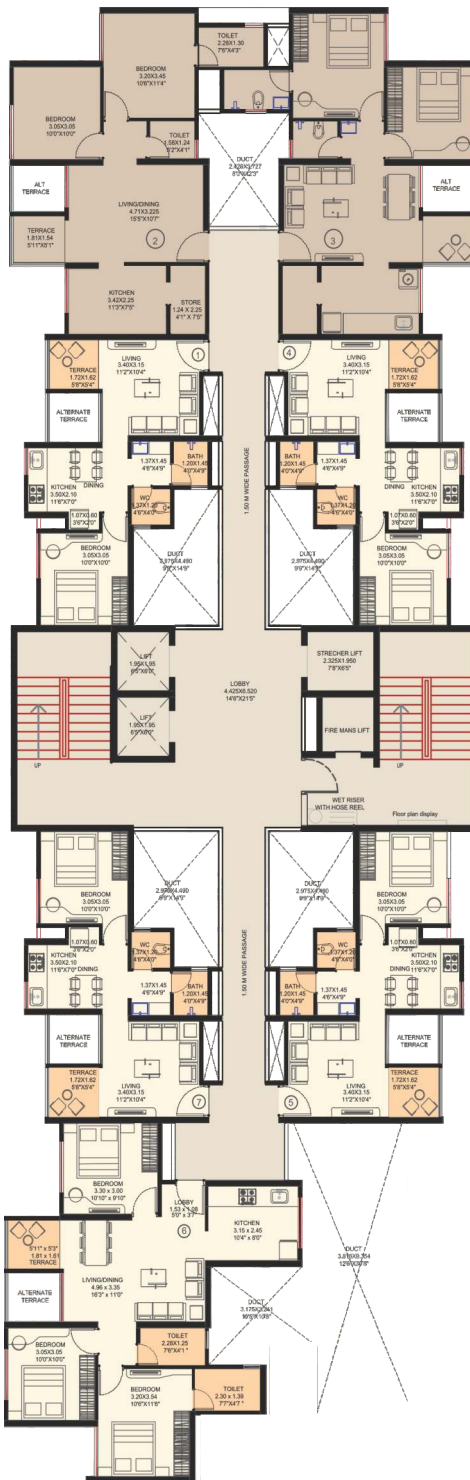
The dimensions mentioned in sq.m. are valid and dimensions mentioned in sq. ft. are for information only. Conversion table is; 1 sq.m. = 10.764 sq.ft. & 1 m. = 3.28 ft.

# VTP BEL AIR

## D2 - BUILDING

### EVEN FLOOR PLAN

Floor Nos. - 2, 4, 6, 8, 10, 12, 14, 16, 18, 20, 22



FLAT NO.	TYPE	CARPET AREA		ENCLOSED BALCONY		TERRACE AREA		TOTAL CARPET AREA	
		IN SQ.M.	IN SQ.FT.	IN SQ.M.	IN SQ.FT.	IN SQ.M.	IN SQ.FT.	IN SQ.M.	IN SQ.FT.
D2-201,401,601,801,1001,1201,1401,1601,1801,2001,2201	1BHK	29.15	314	7.38	79	2.78	30	39.31	423
D2-202,402,602,802,1002,1202,1402,1602,1802,2002,2202	2BHK	49.15	529	6.89	74	2.78	30	58.82	633
D2-203,403,603,803,1003,1203,1403,1603,1803,2003,2203	2BHK	49.15	529	6.89	74	2.78	30	58.82	633
D2-204,404,604,804,1004,1204,1404,1604,1804,2004,2204	1BHK	29.15	314	7.38	79	2.78	30	39.31	423
D2-205,405,605,805,1005,1205,1405,1605,1805,2005,2205	1BHK	29.15	314	7.38	79	2.78	30	39.31	423
D2-206,406,606,806,1006,1206,1406,1606,1806,2006,2206	Smart 3BHK	59.32	639	8.73	94	2.92	31	70.97	764
D2-207,407,607,807,1007,1207,1407,1607,1807,2007,2207	1BHK	29.15	314	7.38	79	2.78	30	39.31	423

Ask our sales advisor for the currently available inventory.



The dimensions mentioned in sq.m. are valid and dimensions mentioned in sq. ft. are for information only. Conversion table is; 1 sq.m. = 10.764 sq.ft. & 1 m. = 3.28 ft.



Ask our sales advisor for the currently available inventory.

UNIT NO.	TYPE	CARPET AREA		ENCLOSED BALCONY		TERRACE AREA		TOTAL CARPET AREA	
		IN SQ.M.	IN SQ.FT.	IN SQ.M.	IN SQ.FT.	IN SQ.M.	IN SQ.FT.	IN SQ.M.	IN SQ.FT.
101,301,501,701,901,1101,1301,1501,1701,1901,2101,2301	3BHK	71.42	768.76	11.09	119.37	6.82	73.41	89.33	961.55
102,302,502,702,902,1102,1302,1502,1702,1902,2102,2302									
103,303,503,703,903,1103,1303,1503,1703,1903,2103,2303		50.02	538.42	10.83	116.57	3.03	32.61	63.88	687.60
104,304,504,704,904,1104,1304,1504,1704,1904,2104,2304		49.29	530.56	11.56	124.43	3.03	32.61	63.88	687.60
2305	2BHK	49.20	529.59	11.56	124.43	3.03	32.61	63.79	686.64
106,306,506,706,906,1106,1306,1506,1706,1906,2106,2306		50.88	547.67	11.56	124.43	3.03	32.61	65.47	704.72
2309									
107,307,507,707,907,1107,1307,1507,1707,1907,2107,2307	3BHK	70.90	763.17	10.98	118.19	4.05	43.59	85.93	924.95
108,308,508,708,908,1108,1308,1508,1708,1908,2108,2308									

**VTP BEL AIR E - BUILDING ODD FLOOR PLAN** Floor Nos. - 1, 3, 5, 7, 9, 11, 13, 15, 17, 19, 21, 23

The dimensions mentioned in sq.m. are valid and dimensions mentioned in sq. ft. are for information only. Conversion table is; 1 sq.m. = 10.764 sq.ft. & 1 m. = 3.28 ft.





Ask our sales advisor for the currently available inventory.

UNIT NO.	TYPE	CARPET AREA		ENCLOSED BALCONY		TERRACE AREA		TOTAL CARPET AREA		
		IN SQ.M.	IN SQ.FT.	IN SQ.M.	IN SQ.FT.	IN SQ.M.	IN SQ.FT.	IN SQ.M.	IN SQ.FT.	
201,401,601,801,1001,1201,1401,1601,1801,2001,2201	3BHK	71.42	768.76	11.09	119.37	6.82	73.41	89.33	961.55	
202,402,602,802,1002,1202,1402,1602,1802,2002,2202										
203,403,603,803,1003,1203,1403,1603,1803,2003,2203	2BHK	50.02	538.42	10.83	116.57	3.03	32.61	63.88	687.60	
205,405,605,805,1005,1205,1405,1605,1805,2005,2205			49.20	529.59	11.56	124.43	3.03	32.61	63.79	686.64
209,409,609,809,1009,1209,1409,1609,1809,2009,2209			50.88	547.67	11.56	124.43	3.03	32.61	65.47	704.72
207,407,607,807,1007,1207,1407,1607,1807,2007,2207	3BHK	70.90	763.17	10.98	118.19	6.85	73.73	88.73	955.09	
208,408,608,808,1008,1208,1408,1608,1808,2008,2208										

VTP BEL AIR

E - BUILDING EVEN FLOOR PLAN Floor Nos. - 2, 4, 6, 8, 10, 12, 14, 16, 18, 20, 22

The dimensions mentioned in sq.m. are valid and dimensions mentioned in sq. ft. are for information only. Conversion table is; 1 sq.m. = 10.764 sq.ft. & 1 m. = 3.28 ft.





		CARPET AREA		ENCLOSED BALCONY		TERRACE AREA		TOTAL CARPET AREA	
		IN SQ.M.	IN SQ.FT.	IN SQ.M.	IN SQ.FT.	IN SQ.M.	IN SQ.FT.	IN SQ.M.	IN SQ.FT.
101,301,501,701,901,1101,1301,1501,1701,1901,2101,2301									
104,304,504,704,904,1104,1304,1504,1704,1904,2104,2304									
105,305,505,705,905,1105,1305,1505,1705,1905,2105,2305									
108,308,508,708,908,1108,1308,1508,1708,1908,2108,2308	2bhk	49.14	528.94	9.96	107.21	2.7	29.06	61.80	665.22
102,302,502,702,902,1102,1302,1502,1702,1902,2102,2302									
103,303,503,703,903,1103,1303,1503,1703,1903,2103,2303									
106,306,506,706,906,1106,1306,1506,1706,1906,2106,2306									
107,307,507,707,907,1107,1307,1507,1707,1907,2107,2307	2.5bhk	61.83	665.54	10.93	117.65	2.7	29.06	75.46	812.25

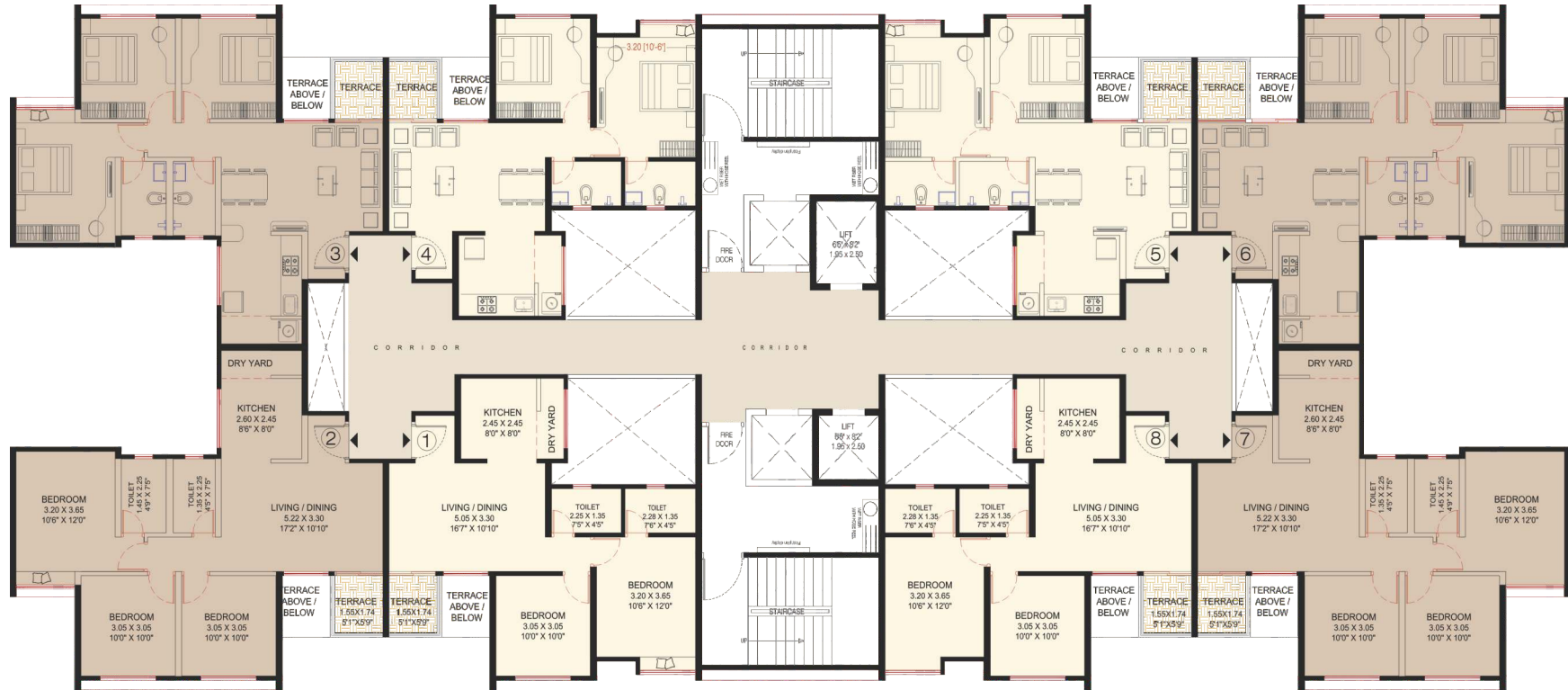
VTP BEL AIR

F - BUILDING ODD FLOOR PLAN Floor Nos. - 1, 3, 5, 7, 9, 11, 13\*, 15, 17, 19, 21

The dimensions mentioned in sq.m. are valid and dimensions mentioned in sq. ft. are for information only. Conversion table is; 1 sq.m. = 10.764 sq.ft. & 1 m. = 3.28 ft.

\*This is a refuge floor and will have lesser unit than other floors. Please ask the sales personnel about actual availability.





		CARPET AREA		ENCLOSED BALCONY		TERRACE AREA		TOTAL CARPET AREA	
		IN SQ.M.	IN SQ.FT.	IN SQ.M.	IN SQ.FT.	IN SQ.M.	IN SQ.FT.	IN SQ.M.	IN SQ.FT.
201,401,601,801,1001,1201,1401,1601,1801,2001,2201									
204,404,604,804,1004,1204,1404,1604,1804,2004,2204									
205,405,605,805,1005,1205,1405,1605,1805,2005,2205									
208,408,608,808,1008,1208,1408,1608,1808,2008,2208	2bhk	49.14	528.94	9.96	107.21	2.7	29.06	61.80	665.22
202,402,602,802,1002,1202,1402,1602,1802,2002,2202									
203,403,603,803,1003,1203,1403,1603,1803,2003,2203									
206,406,606,806,1006,1206,1406,1606,1806,2006,2206									
207,407,607,807,1007,1207,1407,1607,1807,2007,2207	2.5bhk	61.83	665.54	10.93	117.65	2.7	29.06	75.46	812.25

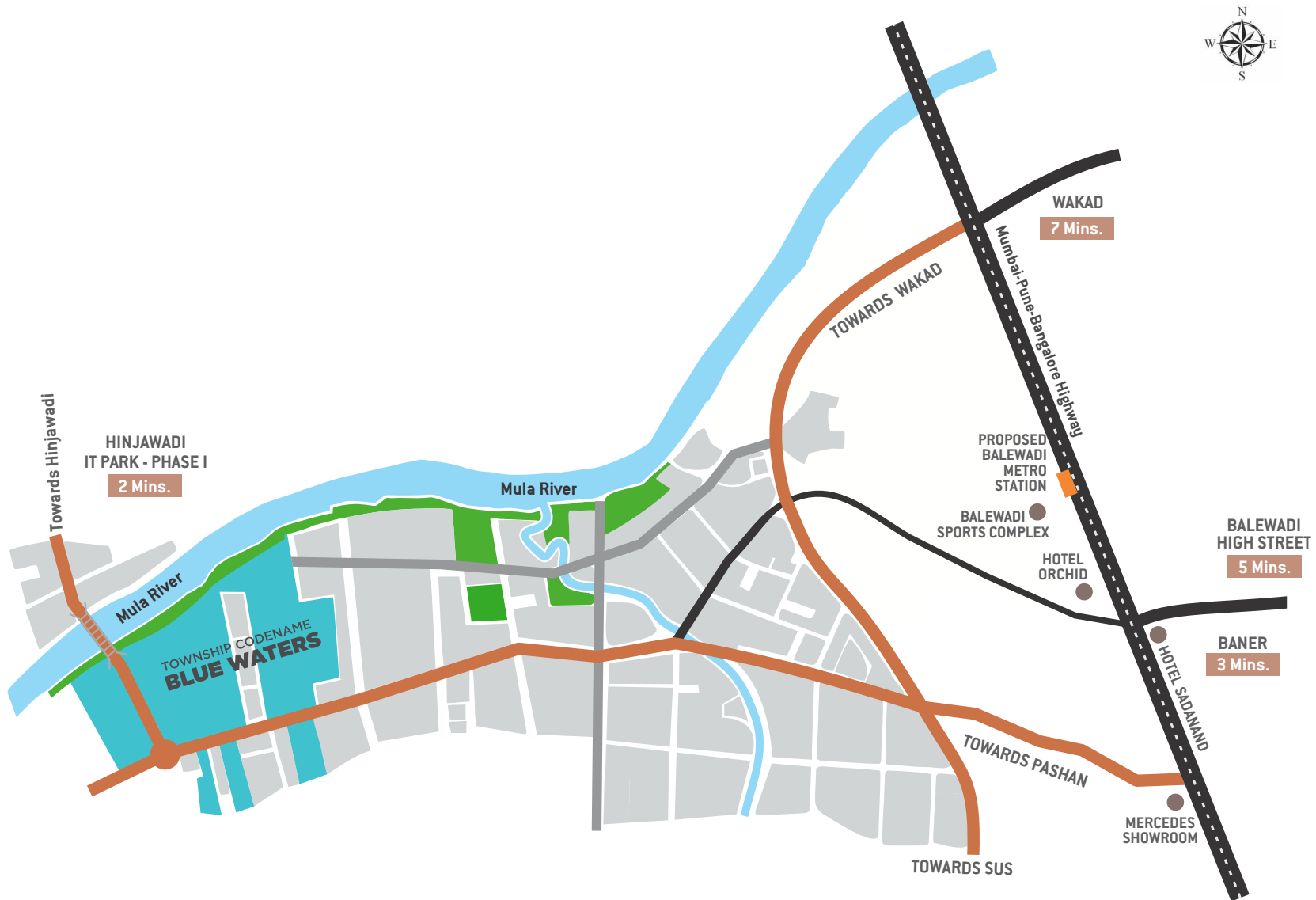
VTP BEL AIR

F - BUILDING EVEN FLOOR PLAN Floor Nos. - 2, 4, 6, 8, 10, 12, 14, 16, 18, 20, 22

The dimensions mentioned in sq.m. are valid and dimensions mentioned in sq. ft. are for information only. Conversion table is; 1 sq.m. = 10.764 sq.ft. & 1 m. = 3.28 ft.

\*This is a refuge floor and will have lesser unit than other floors. Please ask the sales personnel about actual availability.





Site address: Baner Next, Near Balewadi Stadium, Mahalunge, Pune.

[www.vtprealty.in](http://www.vtprealty.in)

MahaRERA Registration No. P52100019986, P52100020081, P52100020331, P52100021327  
 available at [www.maharera.mahaonline.gov.in](http://www.maharera.mahaonline.gov.in)

Disclaimer: All representations are believed to be correct and envisaged by the developer/promoter. All art renderings, illustrations, photographs and pictures contained in this brochure are an artist's impression only and the same should not be construed to be the final images/views of the final project. The plans are only indicative and can be modified as liked by the developer before the launch. The printed material does not constitute a contract/offer of any type between the developer/promoter and the purchaser and shall supersede all statements, documents or representations made prior to signing of such sale and purchase agreement. Terms & conditions apply. The content in this brochure is only indicative and does not imply the ownership of project Township Code Name Blue Waters by VTP Group / VTP Realty. Logo of VTP Realty is copyright and owned by VTP Realty.

