

k FAMVILLE

HINJAWADI CENTRAL (PH - 2)

Launching Tower C2



A Life Enriched by
RICH GREENERY



HINJAWADI CENTRAL: WHERE HOLISTIC LIFE REVOLVES AROUND FAMILIES

Have you ever wondered how your life would be without the daily traffic-packed hours? How would it feel if you could take out more time for your family every day? Pretty unreal, right? But not anymore! At Hinjawadi Central, you'll rediscover the true meaning of family time. Being in the heart of Hinjawadi, every family member will find comforting and joyful moments. Thanks to daily needs, workplaces, entertainment avenues, and shopping hubs that revolve around families at Hinjawadi Central. So, if you have been missing out on quality family time, are fed up with hectic work commutes, or have stopped doing what you love, it's time to reclaim all this and more! Come to Hinjawadi Central and rediscover real family time.



FAMILY LIVING GETS A TOUCH OF RICH GREENERY

Basked in abundant greenery and a pleasant atmosphere, family time at Kohinoor Famville will now be more refreshing and enchanting than ever. Launching Tower C2 at Kohinoor Famville, a family-centric residential marvel at Hinjawadi Central. Thought-through by Kohinoor Group, this fabulous project offers well-planned spacious homes, unique lifestyle amenities, and comfortable living. Be it kids, seniors, or yourself, the one-of-their-kind amenities at Famville will ensure happiness for all.

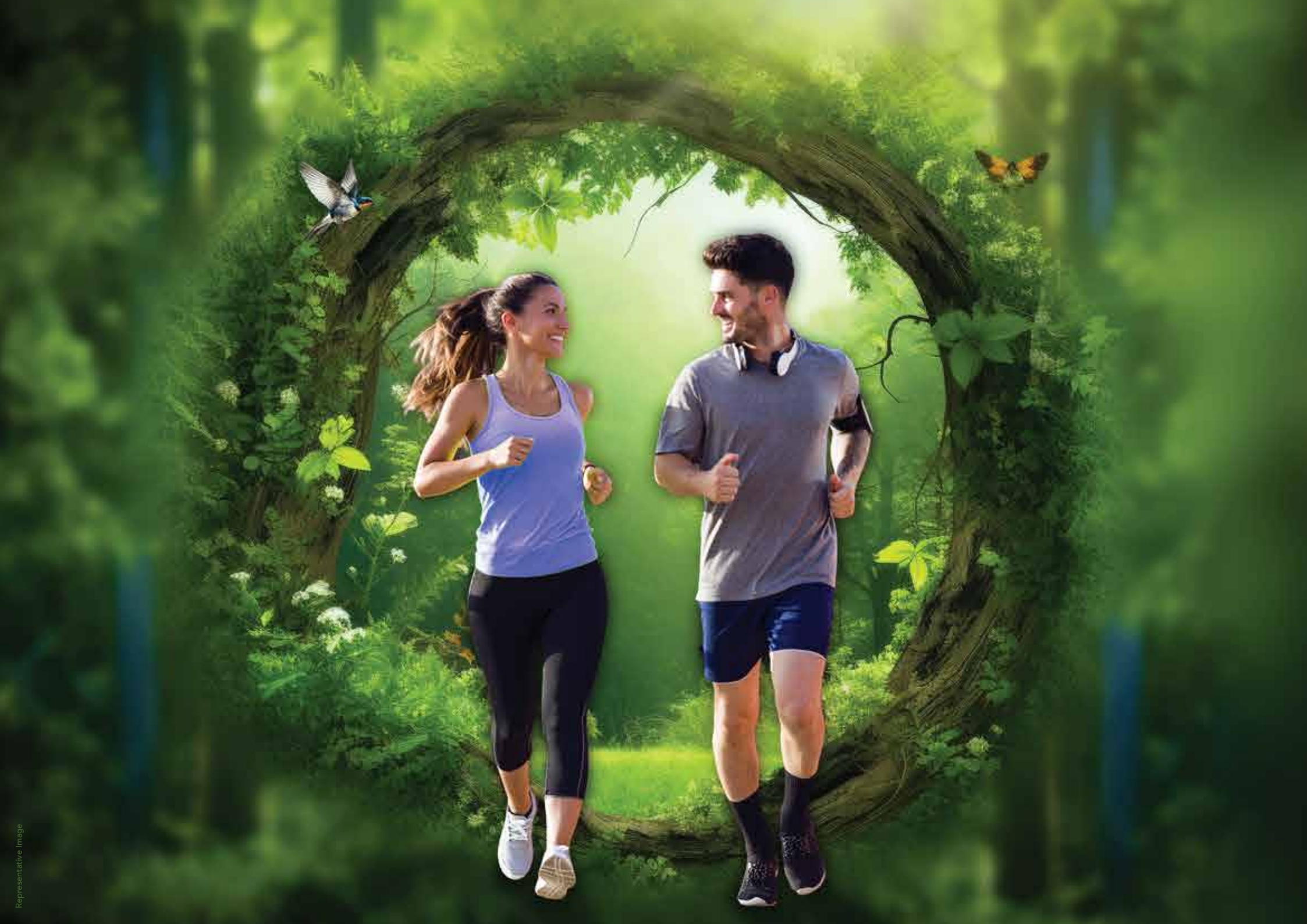
Come home to Kohinoor Famville and embrace a lifetime of family time!

k **FAMVILLE**
HINJAWADI CENTRAL (PH - 2)



Representative Image





FEEL NATURE'S CHARM IN EVERY MOMENT

After a busy and tiring day, our mind always desires some relaxing moments. And to unwind, there's no better companion than nature. At Famville, the inner aura will be surprisingly breezier and more pleasing due to its uniquely designed nature-centric features like the Miyawaki Plantation, Zen Gardens, Neelmohar Plaza, and more. Moreover, nature is just a few steps away from Famville, as it is adorned by the beautiful backdrop of a lush hill. So, whether it's a trek with the kids or a family picnic, nature is ready to welcome you. Just step out of your home and enjoy a great time accompanied by the sweet songs of birds. Come to Famville; experience nature at its best!



OPEN
GREENS



KIDS' PLAY AREA



MIYAWAKI PLANTATION



ZEN GARDEN

All images are for representational purpose only.

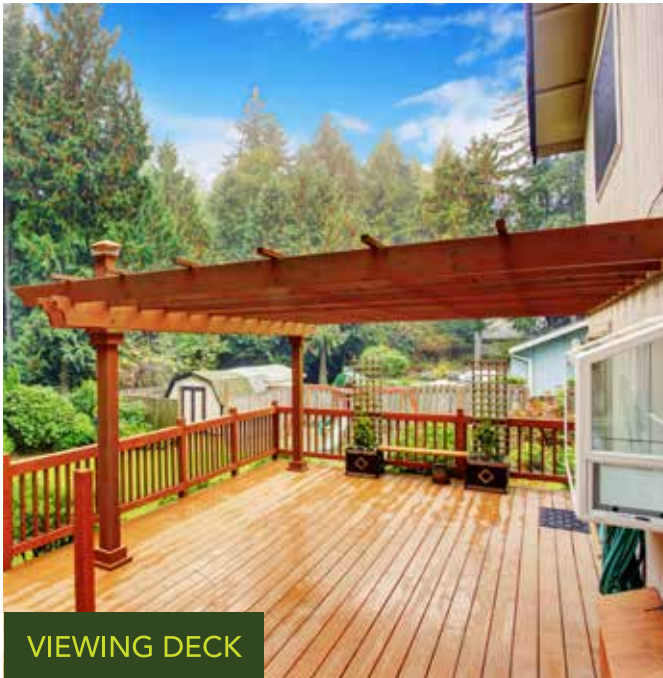


MULTIPURPOSE HALL

AMPHITHEATRE + STAGE



BARBEQUE AREA



VIEWING DECK



PARTY LAWN

All images are for representational purpose only.



FITNESS
ZONE



INDOOR GYMNASIUM



SWIMMING POOL



FITNESS AREA



JOGGING TRACK

All images are for representational purpose only.



SPORTS
ZONE



All images are for representational purpose only.



Artistic Impression

AWE-INSPIRING AMENITIES

INDOOR ACTIVITIES:

Multipurpose Hall
Indoor Games Room

OPEN GREENS:

Amphitheatre + Stage
Party Lawn
Barbeque Area
Kids' Play Area



Artistic Impression

Miyawaki Plantation

Zen Garden

FITNESS SPORTS:

Indoor Gymnasium

Squash Court

Hotfut

Skating Rink

Swimming Pool

Fitness Area

Jogging Track

SPECIFICATIONS

STRUCTURE

- RCC framed conventional system
- AAC block work walls of 125 mm as per design

WINDOWS & DOORS

- Aluminium shutter grey anodized as per sample flat (3 track window with aluminium mosquito mesh) (Inside)
- MS Grill for bedrooms and kitchen windows from inside
- Main Door: flush door with night latch, S.S. hinges and door stopper
- Bedroom Door: flush door with cylindrical lock with S.S. hinges and door magnet
- Toilet flush door with cylindrical lock, S.S. hinges and PVC stopper
- Provision for exhaust fan in toilets and kitchen

FLOORING

600 × 1200 – Kajaria/Varmora/Equivalent vitrified tiles for the entire apartment

Kitchen Tile

- Kitchen wall tile and digital tile - 600 mm × 1200 mm (Kajaria/Varmora/equivalent) dado tile
- Height of kitchen dado above otta / platform - 2 ft above otta

Terrace Tile

- Attach terrace – 150 mm × 600 mm (Kajaria/Varmora/Johnson/equivalent)
- Dry terrace – 300 mm × 300 mm (Kajaria/Varmora/Jahnsen/equivalent) ceramic tile

Common and Master Toilet

- 300 mm × 300 mm – (Kajaria/Varmora/equivalent) ceramic tiles on toilet floor
- 300 mm × 600 mm – (Kajaria/Varmora/equivalent) base tiles on toilet wall

Children's Toilet

- 300 mm × 300 mm – (Kajaria/Varmora/equivalent) ceramic tiles on toilet floor
- 600 mm × 300 mm – (Kajaria/Varmora/equivalent) base tiles on toilet wall

RAILING

- 1200 mm SS and glass railing including RCC band for terraces

KITCHEN

- Premium black granite platform with SS sink (16"×18") - Franke/Nirali/Carysil/equivalent
- SS sink in dry terrace (18"×24") - Franke/Nirali/Carysil/equivalent

ELECTRIFICATION & CABLING

- Wires - Polycab/Finolex/RR/equivalent
- Switches - Schindler Vivace/equivalent
- Telephone point in living room
- TV point in master bedroom and living room
- AC point in master bedroom
- Generator backup for lifts and common areas

BATHROOM

- Slung plumbing PP/HDPE
- CP fittings - Jaquar Lyric/equivalent
- Metropole flush valves - Jaquar Lyric/equivalent
- Sanitary ware - Jaquar/Cera
- Hot and cold mixing diverter in toilets
- Hot water supply in one master bedroom toilet through solar
- STP treated water supply for flush use

LIFTS

- Automatic elevators

WALL FINISHES & PAINT

- Acrylic premium emulsion paint for wall & ceiling
- External wall with textured paint and weather shield with raincoat
- Grills on matt finish paint

SECURITY SYSTEM

- Standalone video door phone
- CCTV in common areas
- Entrance gate with security cabin at main gate

MASTER LAYOUT



Tower - A1
S+2P+20Floors

Tower - B1
S+2P+20Floors

Tower - B2
S+2P+20Floors

Tower - C1
S+2P+20Floors

Tower - C2
2P+20Floors



KEY DISTANCES



WORKSPACES

Embassy Quadron: 1 km

Infosys: 1.2 km

Tech Mahindra: 2.3 km

TCS: 2.3 km

Wipro: 5 km



HEALTHCARE CENTRES

Swami Samarth Hospital: 1.8 km

Ayushree Hospital: 3.4 km

CityCare Hospital: 6.3 km

Surya Mother and Child Hospital: 6.4 km

Sus Hospital: 6.5 km



SCHOOL

Ryan International School: 260 mtr.

Vibgyor School: 3.4 km

Mercedes-Benz International School: 4.3 km

Blue Ridge School: 4.8 km

EuroSchool Wakad: 5.3 km

Akshara International: 5.6 km



SHOPPING DESTINATIONS

Grand Highstreet: 3 km

Reliance Smart: 4.7 km

DMart Hinjawadi: 5 km

Vision One Mall: 6.2 km

Phoenix MarketCity: 6.4 km

HINJAWADI CENTRAL

Effortless access. Effortless life.

Surya Mother and
Child Hospital
6.4 km

DMart Hinjawadi
5 km

Phoenix MarketCity
6.4 km

CityCare
Hospital
6.3 km

Sus Hospital
6.5 km

Grand Highstreet
3 km

Mercedes-Benz
International School
4.3 km

Vision One Mall
6.2 km

Akshara
International
5.6 km

Ayushree Hospital
3.4 km

Ryan International
School
260 mtr

Embassy Quadron
1 km

Blue Ridge School
4.8 km

EuroSchool
Wakad
5.3 km

Wipro
5 km

Tech Mahindra
2.3 km

Swami Samarth
Hospital
1.8 km




Vibgyor School
3.4 km

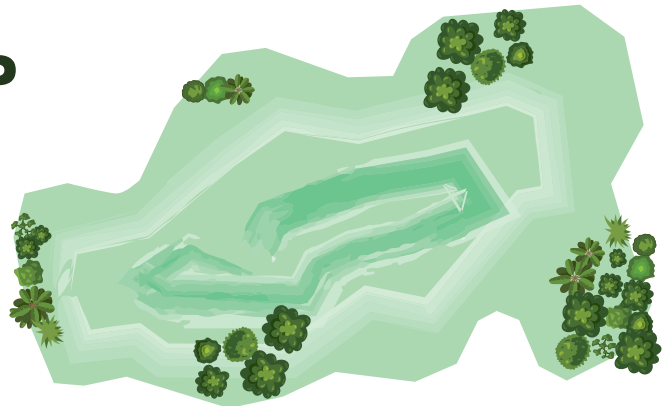
Infosys
1.2 km

TCS
2.3 km

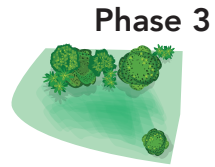
Reliance Smart
4.7 km

LOCATION MAP


-  **Metro Route 3**
Shivaji Nagar to Megapolis Circle
-  Mumbai-Pune Highway
-  Metro Stations



Amrita Vidyalayam



Capgemini India



Ryan International



Happiness Street



TCS



Tech Mahindra



Megapolis



KOHINOOR FAMVILLE




Doehler



Embassy Quadron Business Park


Grand Tamanna Hotel



Infosys



Infosys Phase 2 Gate No.4




Hinjawadi Phase II

Hotel Ibis



Emcure Pharmaceuticals Limited



Gurukul Cricket Academy
(An MCC & PKPF Joint Venture)

Irani Cafe



Grand Hightstreet



Wipro Technologies Ltd



Maan



City Hospital

Shinde Nagar

Akshara School



Indira Institute



Decathlon

Hotel Ginger



Phoenix Marketcity



Bhumkar Nagar

Bhumkar Chowk

Wakad

Hinjawadi Hospital



Shatayu Hospital



Vibgyor School



Terminal One (TATA)



Mezza 9 Restaurant & Banquets



Ruby Hall Clinic

Xion Mall



DMart



Bhujbal Chowk



Shivaji Chowk



Hilton Garden Inn



Courtyard by Marriott

Hinjawadi Phase I



Hyatt



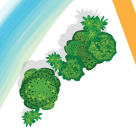
Lemon Tree Hotel



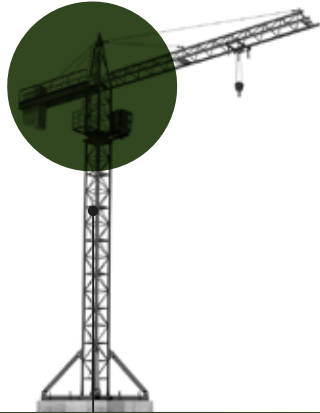
Mahindra International School



Mercedes-Benz International School



Establishment of the **KOHINOOR BRAND**



First construction project under the **'KOHINOOR CONSTRUCTIONS'** brand inaugurated in Bopodi, Pune



Established **'WORLD OF MOTHER'** - a one-of-its-kind commercial complex dedicated to empowering women entrepreneurs



Launched the **FIRST MULTIPLEX** in Pimpri-Chinchwad

Delivered a joyful future to **1000+ HAPPY FAMILIES**



A township of 504 apartments - **LATIS** launched in Talegaon
Delivered a joyful future to **2000+ HAPPY FAMILIES**

1983

1989

1995

2001

2002

2006

2007

2008

2009

2010

Kohinoor **CEMENT TRADING DIVISION** established



Tied up with **KIMBERLY CLARK** at Pimpri-Chinchwad, for manufacturing tissues

Launched first project of 300 rowhouses in Pimple Saudagar - **SHUBHASHREE WOODS**

Completed **1 MILLION SQ. FT.** of construction

Signed the first agreement with **TATA GROUP** for **HOTEL GINGER** in PCMC



Completed **2 MILLION SQ. FT.** of construction

LAUNCH OF NANO HOMES - an affordable housing project in Ravet





Signed two agreements with **INDOSPACE - TWO OF THE LARGEST LOGISTICS PARKS** at Ranjangaon and Chakan

2013

Completed **3 MILLION SQ. FT.** of construction

Delivered a joyful future to **3000+ HAPPY FAMILIES**

Delivered a joyful future to **4000+ HAPPY FAMILIES**

2014

Completed **4 MILLION SQ. FT.** of construction

Ventured into the exciting serviced hostels business with **YOUTHVILLE**



Launched **ABHIMAAN TOWNSHIP** at Shirgaon with 1155 homes (Phase I & II) in July 2017

2017

Delivered a joyful future to **5000+ HAPPY FAMILIES**

Completed **5 MILLION SQ. FT.** of construction

Completed **6 MILLION SQ. FT.** of construction

2018

1000+ homes delivered
Launched 2 new-age projects - **KOHINOOR SAPPHIRE** and **KOHINOOR CORAL**

Delivered a joyful future to **6000+ HAPPY FAMILIES**

2019



Launched new projects **KOHINOOR SAPPHIRE 2, TATHAWADE** and **KOHINOOR JEEVA, BIBWEWADI**

2020

Newly-launched commercial project: **KOHINOOR WORLD TOWERS, PIMPRI**

Newly-launched residential projects: **KOHINOOR EMERALD, SUS**, **KOHINOOR GRANDEUR, RAVET**

2021

Newly-launched residential projects: **KOHINOOR SHANGRILA, PIMPRI**

PRESIDENTIA, SOPAN BAUG ANNEXE, **SPORTSVILLE, MAAN, HINJAWADI PH.1** and **KOHINOOR VIVA CITY, DHANORI**

2022

Newly-launched residential project: **KOHINOOR SAPPHIRE 3, TATHAWADE**
Delivered a joyful future to **8000+ HAPPY FAMILIES**

Completed **8 MILLION SQ. FT.** of construction
Newly-launched residential projects: **COURTYARD ONE, WAKAD**, **ABHIMAAN TOWNSHIP, PHASE 3, SHIRGAON** and **KOHINOOR KALEIDO, NEW KHARADI**

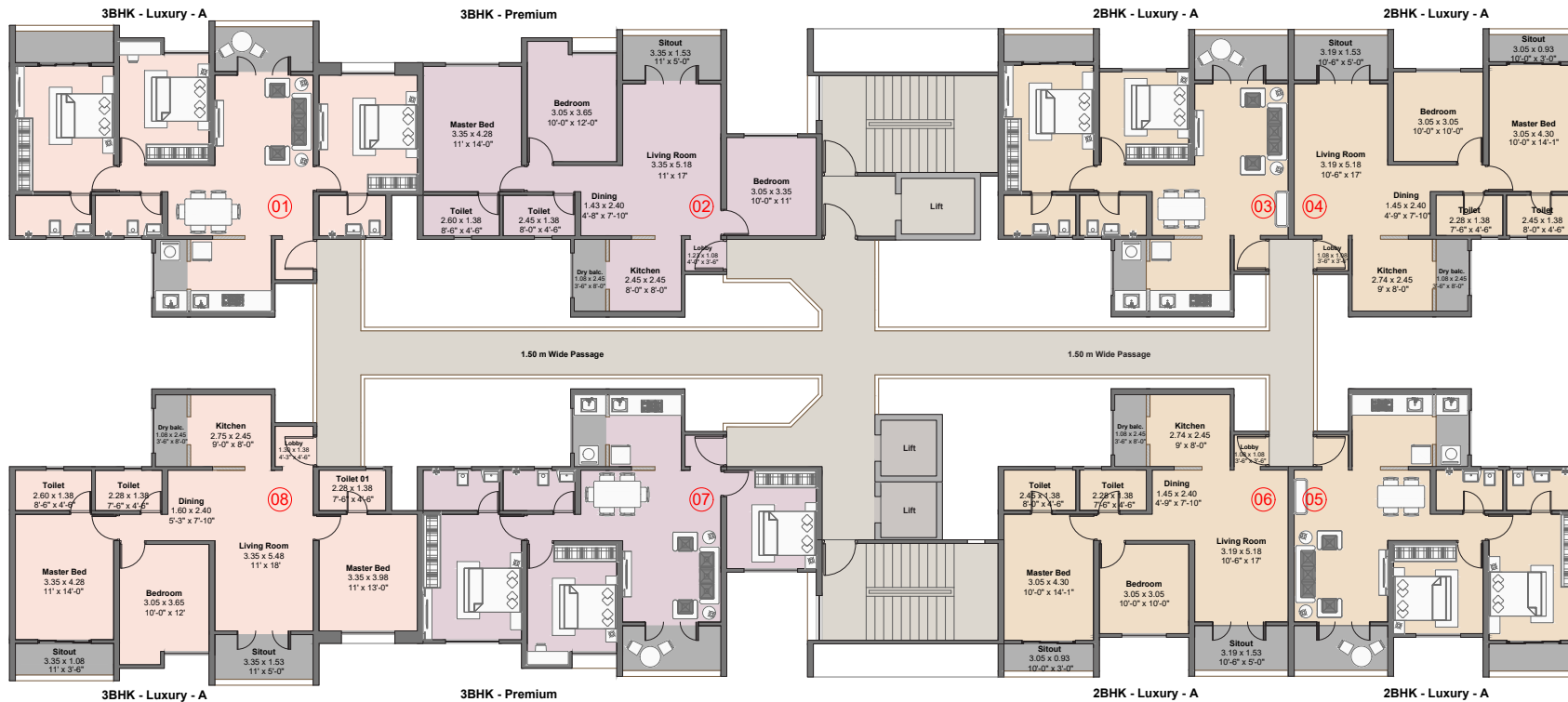
Newly-launched residential projects: **KOHINOOR WESTVIEW RESERVE, NEW WAKAD**, **KOHINOOR FAMVILLE, HINJAWADI CENTRAL (PH 2)** and **KOHINOOR VIVA PIXEL DHANORI PH.1**

2023

Newly-launched commercial project: **KOHINOOR BUSINESS TOWER, KP ANNEXE**

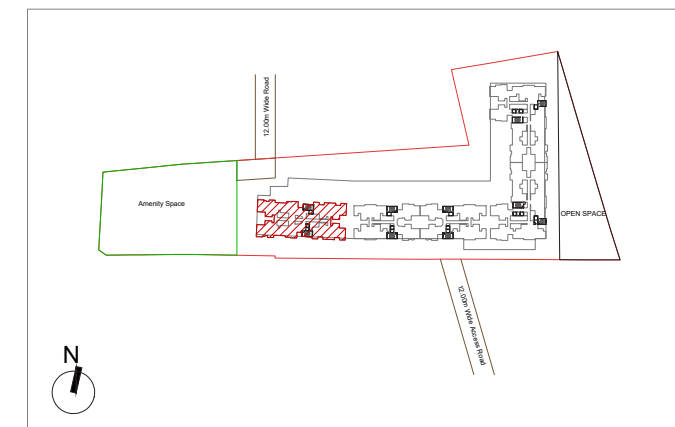
FLOOR PLANS

Tower - A1



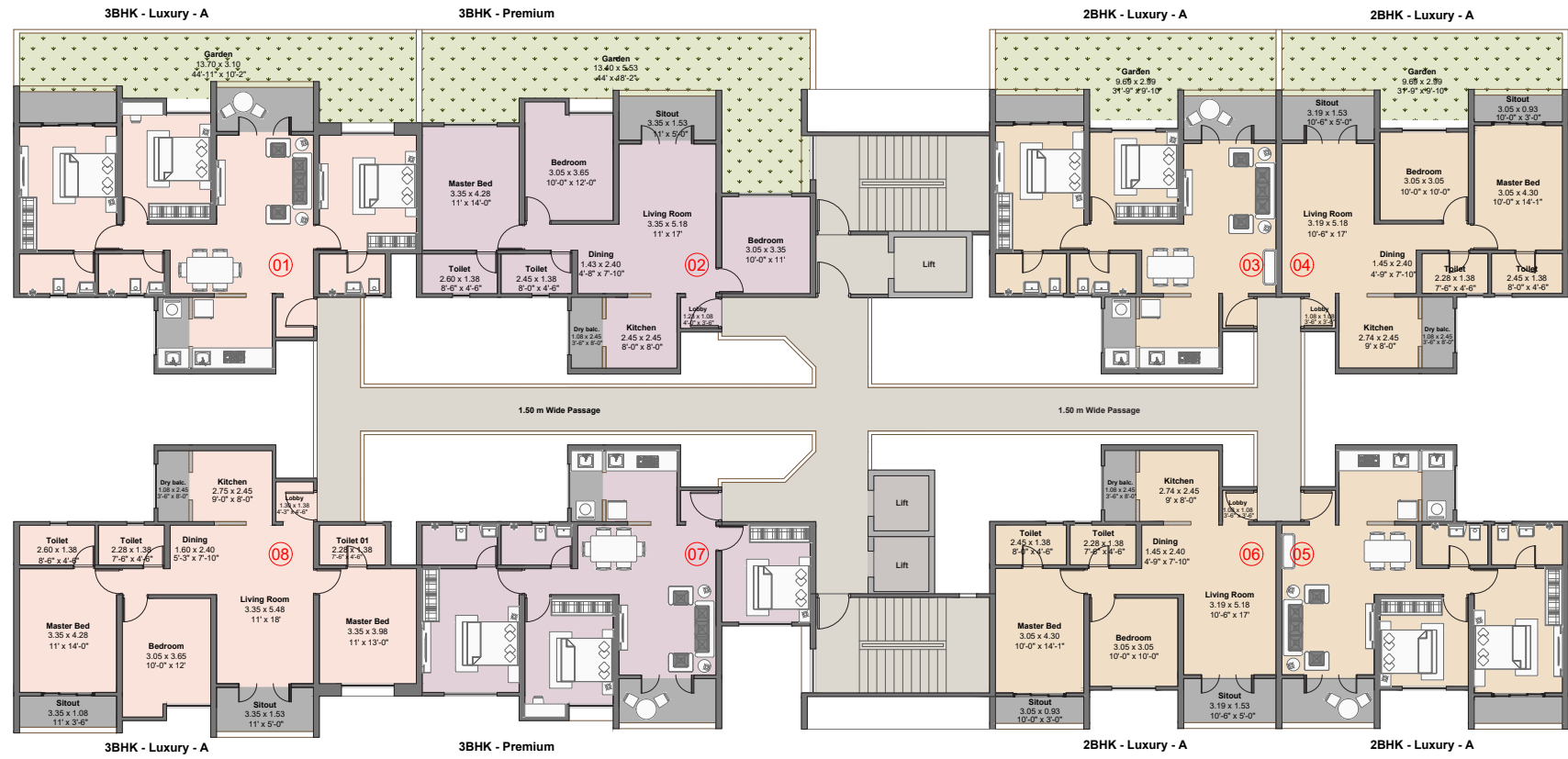
TOWER A1
TYPICAL FLOOR PLAN

NO.	FLAT NO.	TYPE	CARPET AREA		BALCONY (EXCLUSIVE)		BALCONY DRY (EXCLUSIVE)		TOTAL AREA	
			Sqmt.	Sqft.	Sqmt.	Sqft.	Sqmt.	Sqft.	Sqmt.	Sqft.
01 08	201,301,401,501,701,801,901,1001,1201,1301,1401,1501,1701,1801,1901,2001 208,308,408,508,708,808,908,1008,1208,1308,1408,1508,1708,1808,1908,2008	3BHK-Lu-A	88.18	949.17	8.71	93.75	2.63	28.31	99.52	1071
02 07	202,302,402,502,702,802,902,1002,1202,1302,1402,1502,1702,1802,1902,2002 207,307,407,507,707,807,907,1007,1207,1307,1407,1507,1707,1807,1907,2007	3BHK-Pr	78.44	844.33	5.10	54.89	2.63	28.31	86.17	927
03 04 05 06	203,303,403,503,703,803,903,1003,1203,1303,1403,1503,1703,1803,1903,2003 204,304,404,504,704,804,904,1004,1204,1304,1404,1504,1704,1804,1904,2004 205,305,405,505,705,805,905,1005,1205,1305,1405,1505,1705,1805,1905,2005 206,306,406,506,706,806,906,1006,1206,1306,1406,1506,1706,1806,1906,2006	2BHK-Lu-A	63.23	680.61	7.68	82.67	2.63	28.31	73.54	792



KEY PLAN

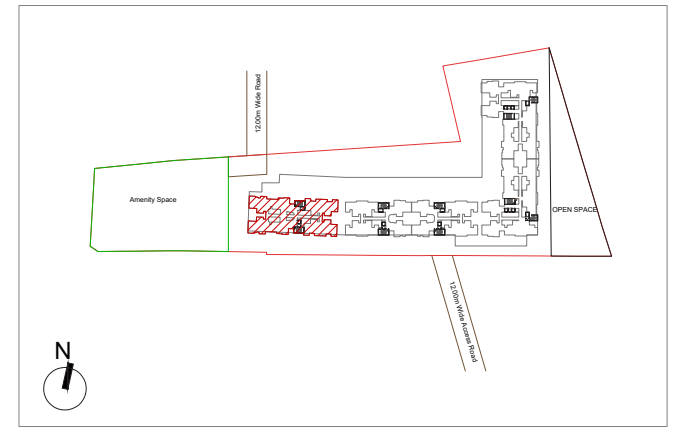
Tower - A1



TOWER A1
FIRST FLOOR PLAN



NO.	FLAT NO.	TYPE	CARPET AREA		BALCONY (EXCLUSIVE)		BALCONY DRY (EXCLUSIVE)		Total Carpet Area		GARDEN AREA	
			Sqmt.	Sqft.	Sqmt.	Sqft.	Sqmt.	Sqft.	Sqmt.	Sqft.	Sqmt.	Sqft.
01	101	3BHK-Lu-A	88.18	949.17	8.71	93.75	2.63	28.31	99.52	1071	31.46	338.64
08	108	3BHK-Lu-A	88.18	949.17	8.71	93.75	2.63	28.31	99.52	1071	-	-
02	102	3BHK-Pr	78.44	844.33	5.10	54.89	2.63	28.31	86.17	927	42.70	459.62
07	107	3BHK-Pr	78.44	844.33	5.10	54.89	2.63	28.31	86.17	927	-	-
03	103	2BHK-Lu-A	63.23	680.61	7.68	82.67	2.63	28.31	73.54	792	23.44	252.31
04	104											
05	105	2BHK-Lu-A	63.23	680.61	7.68	82.67	2.63	28.31	73.54	792	-	-
06	106											

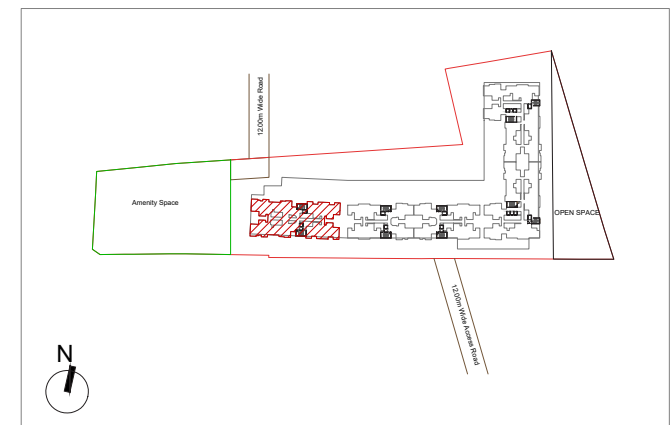


Tower - A



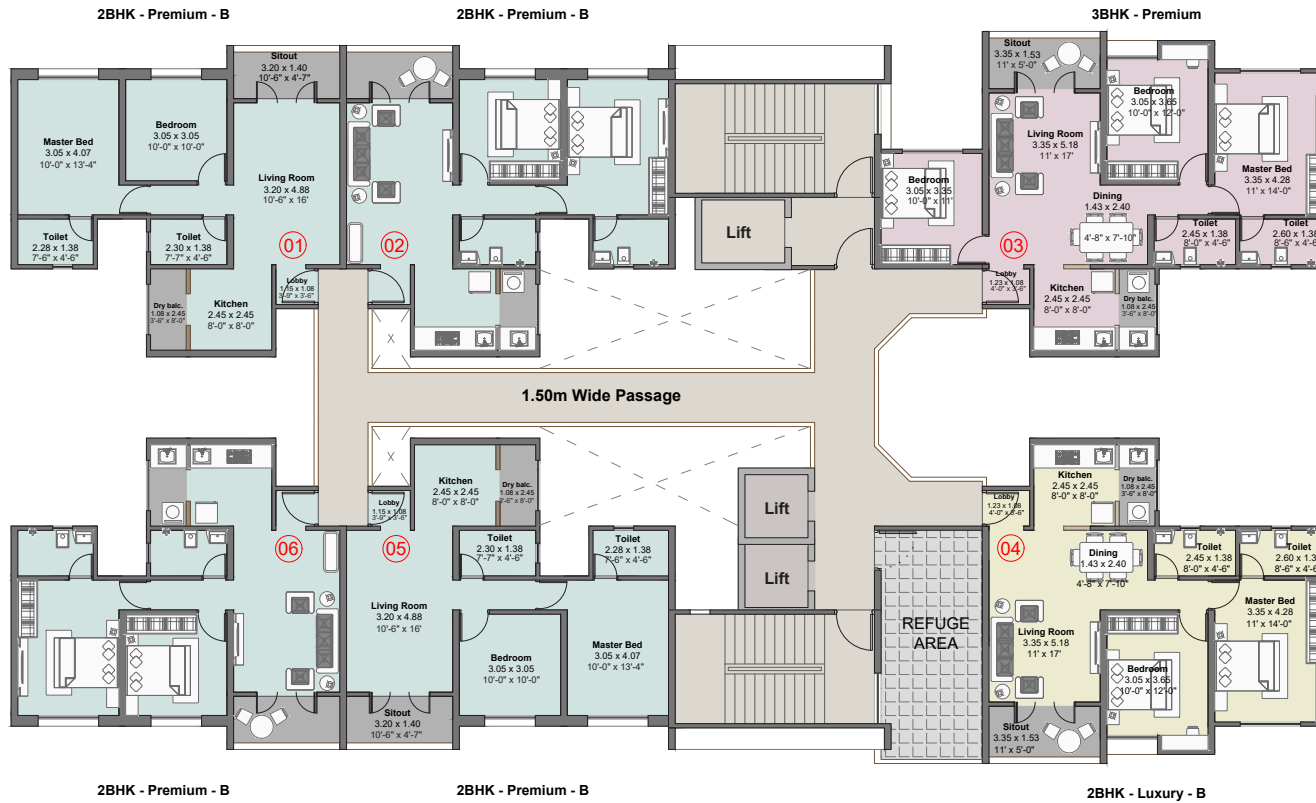
TOWER A1
REFUGE FLOOR PLAN

NO.	FLAT NO.	TYPE	CARPET AREA		BALCONY (EXCLUSIVE)		BALCONY DRY (EXCLUSIVE)		TOTAL AREA	
			Sqmt.	Sqft.	Sqmt.	Sqft.	Sqmt.	Sqft.	Sqmt.	Sqft.
01	601,1101,1601	3BHK-Lu-A	88.18	949.17	8.71	93.75	2.63	28.31	99.52	1071
08	608,1108,1608									
02	602,1102,1602	3BHK-Pr	78.44	844.33	5.10	54.89	2.63	28.31	86.17	927
07	607,1107,1607	2BHK-Lu-B	67.55	727.11	5.10	54.89	2.63	28.31	75.28	810
03	603,1103,1603	2BHK-Lu-A	63.23	680.61	7.68	82.67	2.63	28.31	73.54	792
04	604,1104,1604									
05	605,1105,1605									
06	606,1106,1606									



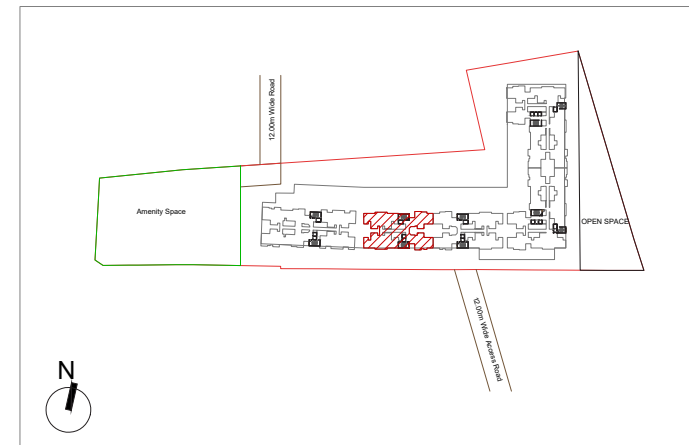
KEY PLAN

Tower - B1



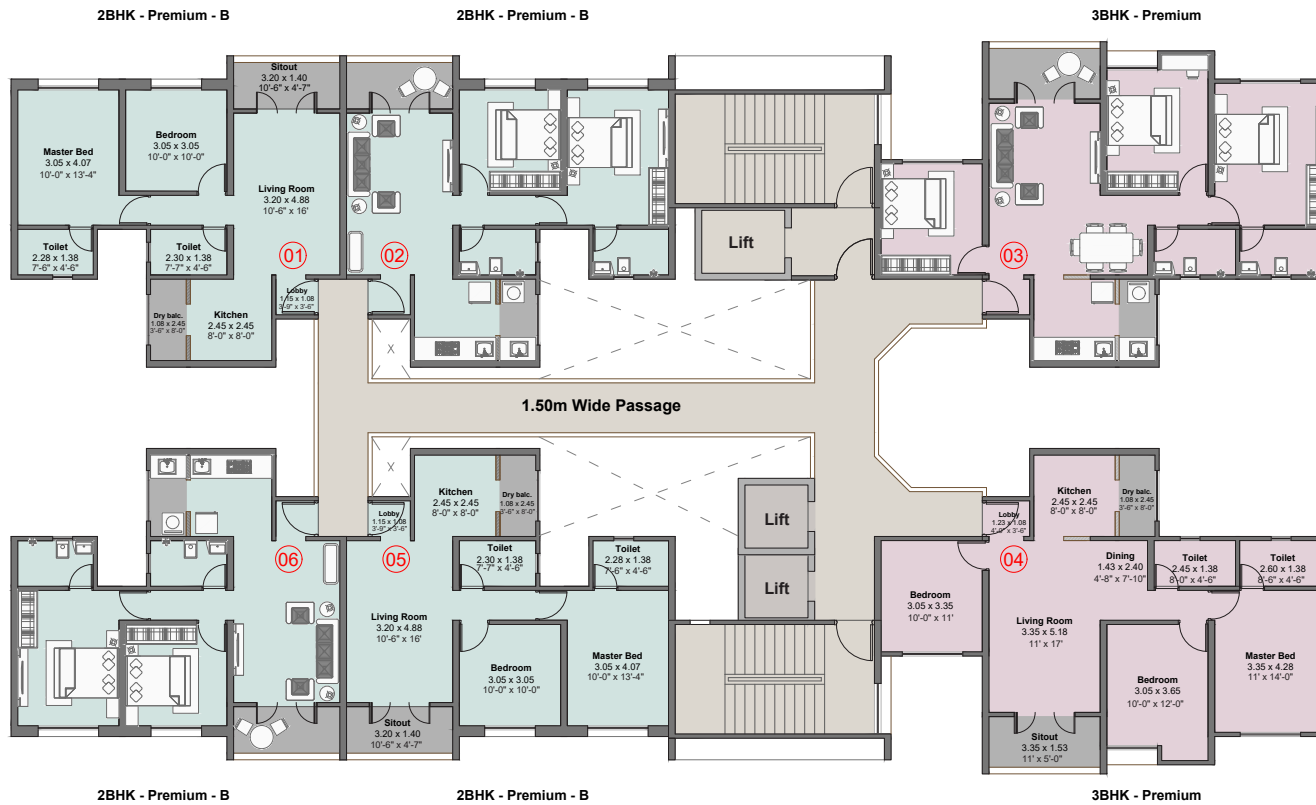
TOWER B1
REFUGE FLOOR PLAN

NO.	FLAT NO.	TYPE	CARPET AREA		BALCONY (EXCLUSIVE)		BALCONY DRY (EXCLUSIVE)		TOTAL AREA	
			Sqmt.	Sqft.	Sqmt.	Sqft.	Sqmt.	Sqft.	Sqmt.	Sqft.
01	601,1101,1601	2BHK-Pr-B	58.09	625.28	4.48	48.22	2.63	28.31	65.20	702
02	602,1102,1602									
05	605,1105,1605									
06	606,1106,1606									
03	603,1103,1603	3BHK-Pr	78.44	844.33	5.10	54.89	2.63	28.31	86.17	927
04	604,1104,1604	2BHK-Lu-B	67.55	727.11	5.10	54.89	2.63	28.31	75.28	810



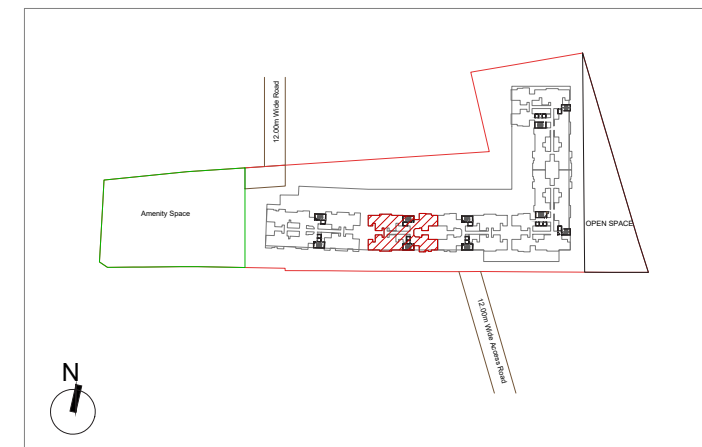
KEY PLAN

Tower - B1



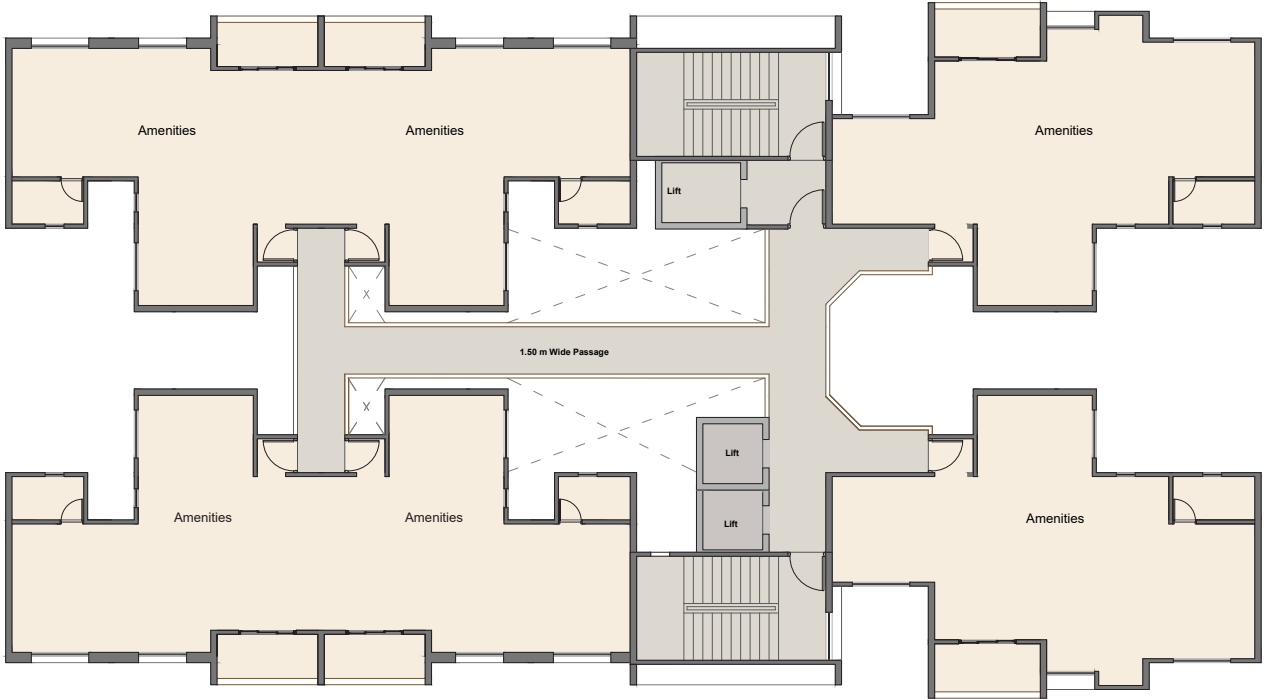
TOWER B1
TYPICAL FLOOR PLAN

NO.	FLAT NO.	TYPE	CARPET AREA		BALCONY (EXCLUSIVE)		BALCONY DRY (EXCLUSIVE)		TOTAL AREA	
			Sqmt.	Sqft.	Sqmt.	Sqft.	Sqmt.	Sqft.	Sqmt.	Sqft.
01	301,401,501,701,801,901,1001,1201,1301,1401,1501,1701,1801,1901,2001	2BHK-Pr-B	58.09	625.28	4.48	48.22	2.63	28.31	65.20	702
02	302,402,502,702,802,902,1002,1202,1302,1402,1502,1702,1802,1902,2002									
05	305,405,505,705,805,905,1005,1205,1305,1405,1505,1705,1805,1905,2005									
06	306,406,506,706,806,906,1006,1206,1306,1406,1506,1706,1806,1906,2006									
03	303,403,503,703,803,903,1003,1203,1303,1403,1503,1703,1803,1903,2003	3BHK-Pr	78.44	844.33	5.10	54.89	2.63	28.31	86.17	927
04	304,404,504,704,804,904,1004,1204,1304,1404,1504,1704,1804,1904,2004									

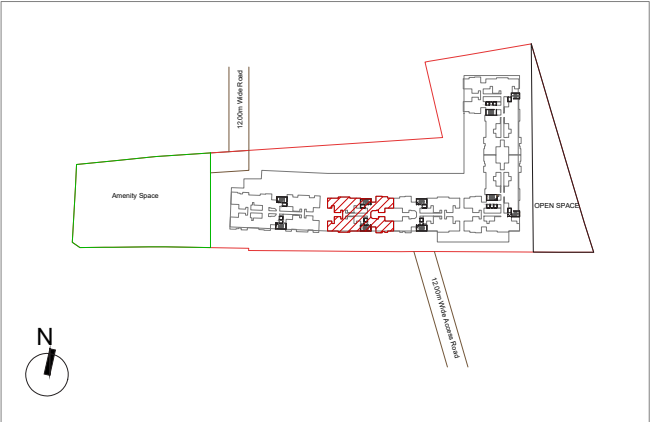


KEY PLAN

Tower - B1

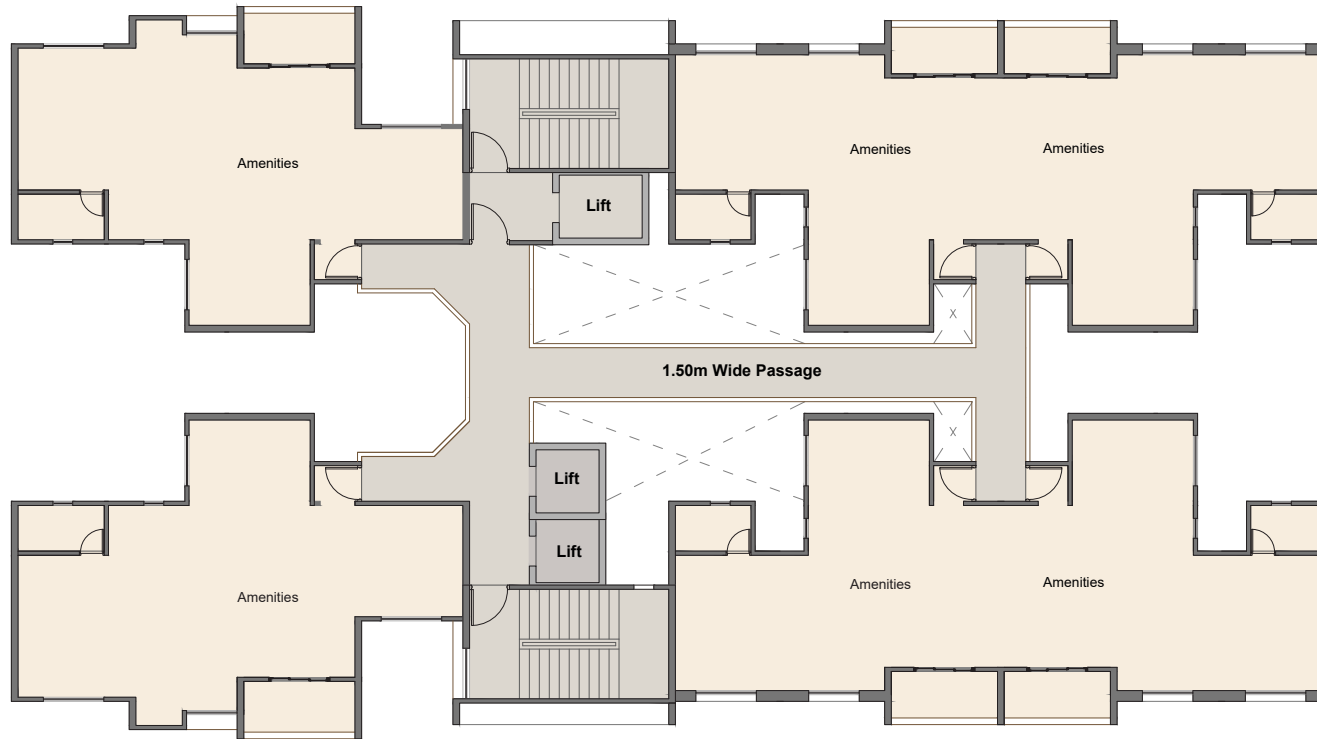


TOWER B1
FIRST FLOOR PLAN
(Double Height)

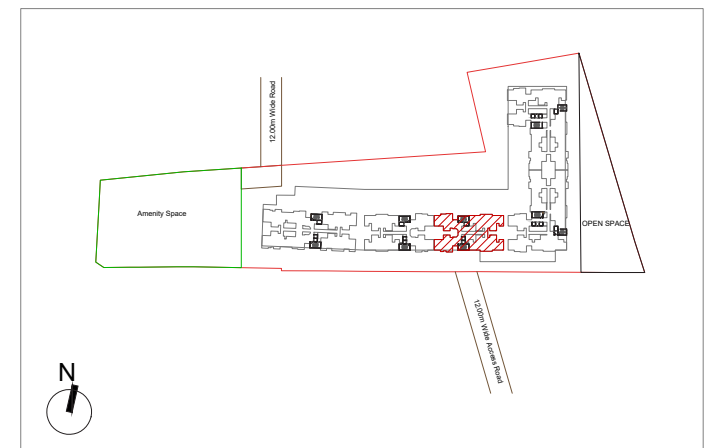


KEY PLAN

Tower - B2

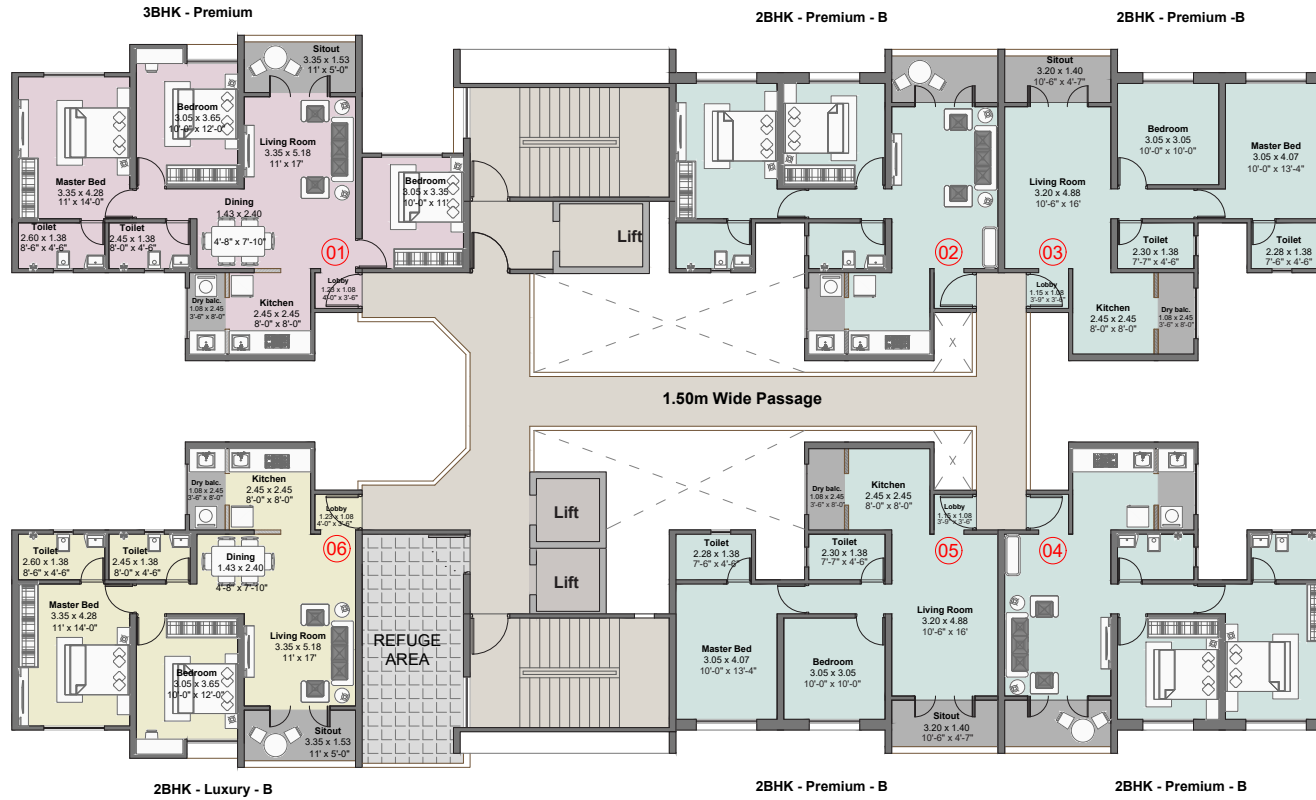


TOWER B2
FIRST FLOOR PLAN
(Double Height)



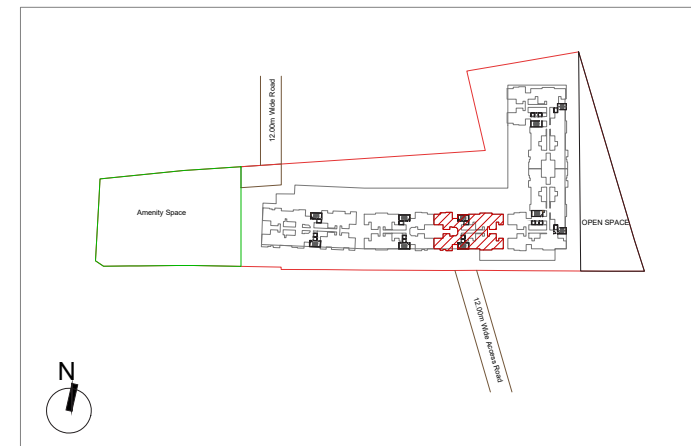
KEY PLAN

Tower - B2



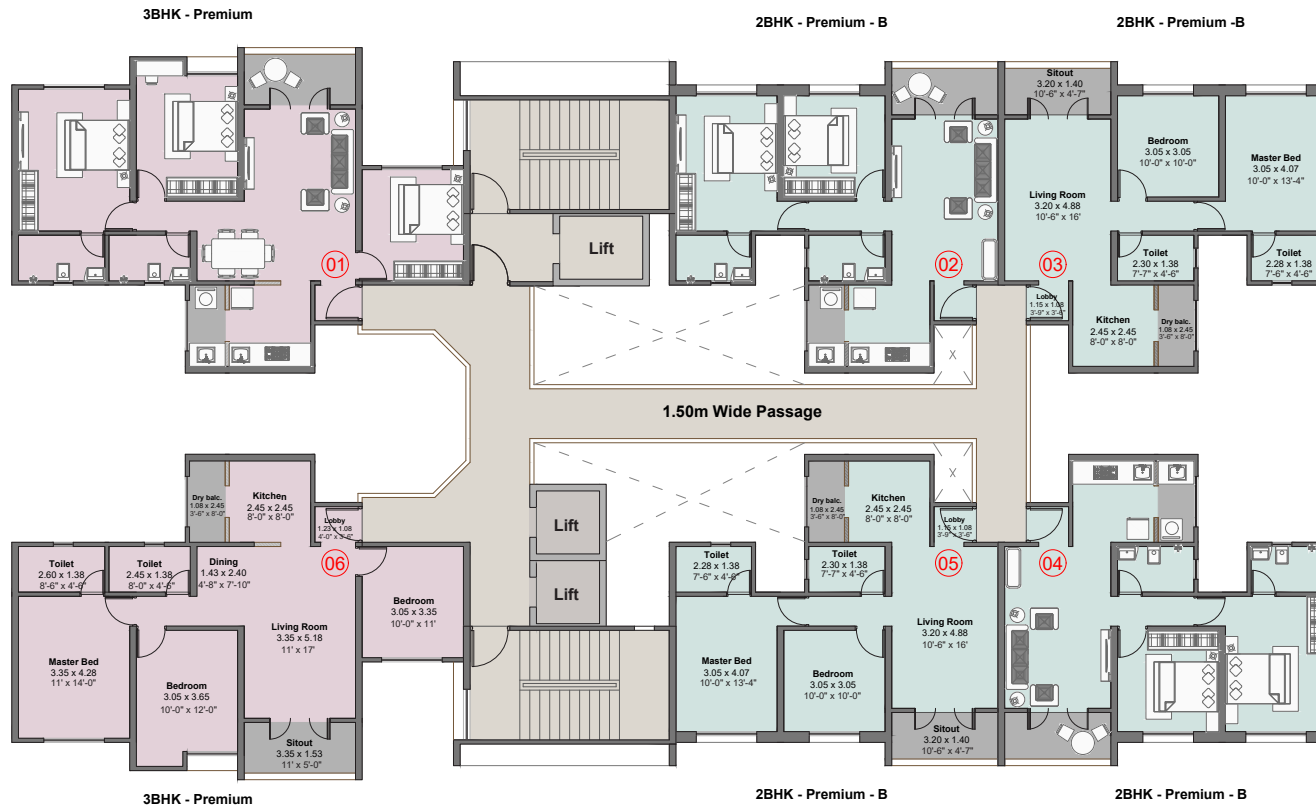
TOWER B2
REFUGE FLOOR PLAN

NO.	FLAT NO.	TYPE	CARPET AREA		BALCONY (EXCLUSIVE)		BALCONY DRY (EXCLUSIVE)		TOTAL AREA	
			Sqmt.	Sqft.	Sqmt.	Sqft.	Sqmt.	Sqft.	Sqmt.	Sqft.
01	601,1101,1601	3BHK-Pr	78.44	844.33	5.10	54.89	2.63	28.31	86.17	927
06	606,1106,1606	2BHK-Lu-B	67.55	727.11	5.10	54.89	2.63	28.31	75.28	810
02	602,1102,1602	2BHK-Pr-B	58.09	625.28	4.48	48.22	2.63	28.31	65.20	702
03	603,1103,1603									
04	604,1104,1604									
05	605,1105,1605									



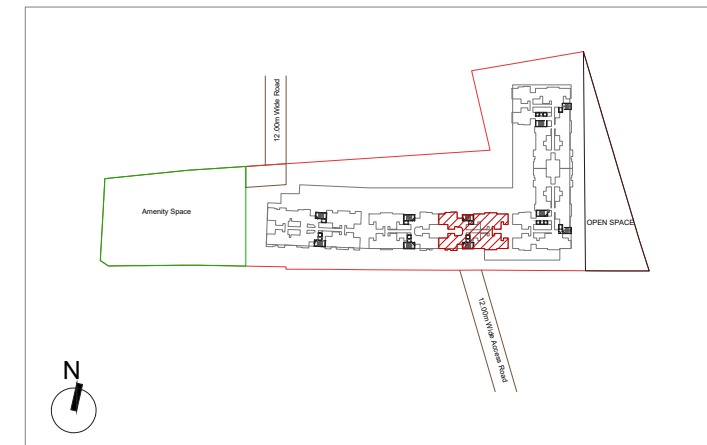
KEY PLAN

Tower - B2



TOWER B2
TYPICAL FLOOR PLAN

NO.	FLAT NO.	TYPE	CARPET AREA		BALCONY (EXCLUSIVE)		BALCONY DRY (EXCLUSIVE)		TOTAL AREA	
			Sqmt.	Sqft.	Sqmt.	Sqft.	Sqmt.	Sqft.	Sqmt.	Sqft.
01 06	301,401,501,701,801,901,1001,1201,1301,1401,1501,1701,1801,1901,2001 306,406,506,706,806,906,1006,1206,1306,1406,1506,1706,1806,1906,2006	3BHK-Pr	78.44	844.33	5.10	54.89	2.63	28.31	86.17	927
02 03 04 05	302,402,502,702,802,902,1002,1202,1302,1402,1502,1702,1802,1902,2002 303,403,503,703,803,903,1003,1203,1303,1403,1503,1703,1803,1903,2003 304,404,504,704,804,904,1004,1204,1304,1404,1504,1704,1804,1904,2004 305,405,505,705,805,905,1005,1205,1305,1405,1505,1705,1805,1905,2005	2BHK-Pr-B	58.09	625.28	4.48	48.22	2.63	28.31	65.20	702



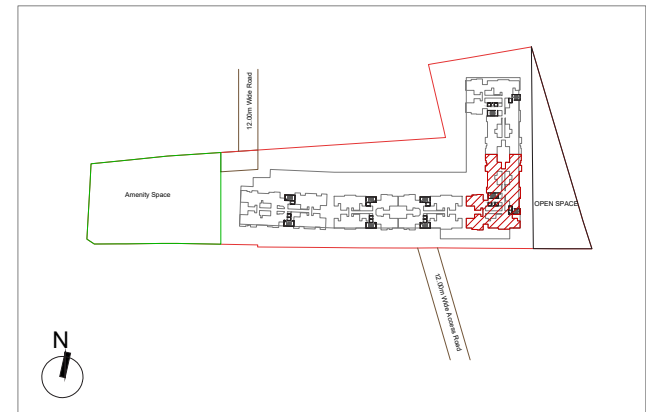
KEY PLAN

Tower - C1

TOWER C1
FIRST FLOOR PLAN



NO.	FLAT NO.	TYPE	CARPET AREA		BALCONY (EXCLUSIVE)		BALCONY DRY (EXCLUSIVE)		TOTAL AREA		GARDEN AREA	
			Sqmt.	Sqft.	Sqmt.	Sqft.	Sqmt.	Sqft.	Sqmt.	Sqft.	Sqmt.	Sqft.
01	101	2BHK-Pr-A	58.13	625.71	4.40	47.36	2.63	28.31	65.16	702	27.77	298.92
04	104	2BHK-Pr-A	58.13	625.71	4.40	47.36	2.63	28.31	65.16	702	-	-
05	105											
06	106											
07	107											
02	102	3BHK-Lu-B	88.17	949.06	8.71	93.75	2.63	28.31	99.51	1071	30.69	330.35
03	103	3BHK-Lu-B	88.17	949.06	8.71	93.75	2.63	28.31	99.51	1071	-	-
08	108	3BHK-Pr	78.44	844.33	5.10	54.89	2.63	28.31	86.17	927	-	-
09	109	3BHK-Pr	78.44	844.33	5.10	54.89	2.63	28.31	86.17	927	35.36	380.62



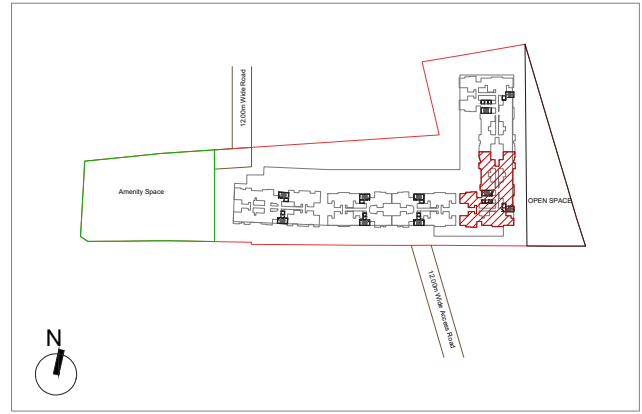
KEY PLAN

Tower - C1

TOWER C1
TYPICAL FLOOR PLAN



NO.	FLAT NO.	TYPE	CARPET AREA		BALCONY (EXCLUSIVE)		BALCONY DRY (EXCLUSIVE)		TOTAL AREA										
			Sqmt.	Sqft.	Sqmt.	Sqft.	Sqmt.	Sqft.	Sqmt.	Sqft.									
01	201,301,401,501,701,801,901,1001,1201,1301,1401,1501,1701,1801,1901,2001	2BHK-Pr-A	58.13	625.71	4.40	47.36	2.63	28.31	65.16	702									
04	204,304,404,504,704,804,904,1004,1204,1304,1404,1504,1704,1804,1904,2004																		
05	205,305,405,505,705,805,905,1005,1205,1305,1405,1505,1705,1805,1905,2005																		
06	206,306,406,506,706,806,906,1006,1206,1306,1406,1506,1706,1806,1906,2006																		
07	207,307,407,507,707,807,907,1007,1207,1307,1407,1507,1707,1807,1907,2007																		
02	202,302,402,502,702,802,902,1002,1202,1302,1402,1502,1702,1802,1902,2002										3BHK-Lu-B	88.17	949.06	8.71	93.75	2.63	28.31	99.51	1071
03	203,303,403,503,703,803,903,1003,1203,1303,1403,1503,1703,1803,1903,2003																		
08	208,308,408,508,708,808,908,1008,1208,1308,1408,1508,1708,1808,1908,2008	3BHK-Pr	78.44	844.33	5.10	54.89	2.63	28.31	86.17	927									
09	209,309,409,509,709,809,909,1009,1209,1309,1409,1509,1709,1809,1909,2009																		



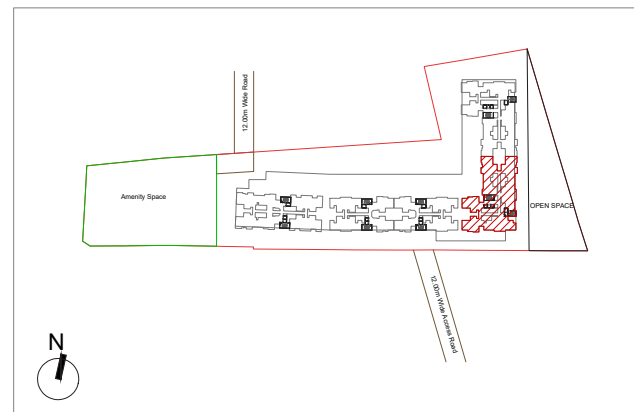
KEY PLAN

Tower - C1

TOWER C1
REFUGE FLOOR PLAN



NO.	FLAT NO.	TYPE	CARPET AREA		BALCONY (EXCLUSIVE)		BALCONY DRY (EXCLUSIVE)		TOTAL AREA	
			Sqmt.	Sqft.	Sqmt.	Sqft.	Sqmt.	Sqft.	Sqmt.	Sqft.
01	601,1101,1601	2BHK-Pr-A	58.13	625.71	4.40	47.36	2.63	28.31	65.16	702
04	604,1104,1604									
05	605,1105,1605									
06	606,1106,1606									
07	607,1107,1607									
02	602,1102,1602	3BHK-Lu-B	88.17	949.06	8.71	93.75	2.63	28.31	99.51	1071
03	603,1103,1603									
08	608,1108,1608	2BHK-Lu-B	67.55	727.11	5.10	54.89	2.63	28.31	75.28	810
09	609,1109,1609	3BHK-Pr	78.44	844.33	5.10	54.89	2.63	28.31	86.17	927



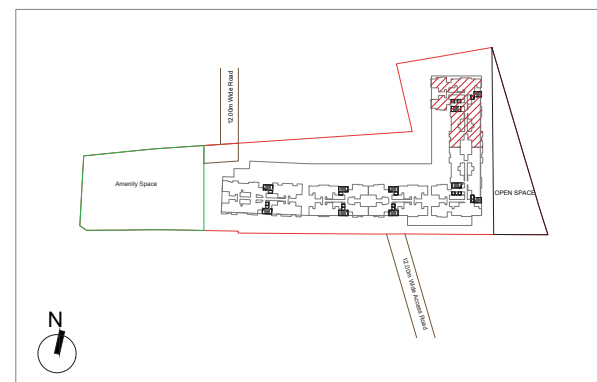
KEY PLAN

Tower - C2

TOWER C2
FIRST FLOOR PLAN



NO.	FLAT NO.	TYPE	CARPET AREA		BALCONY (EXCLUSIVE)		BALCONY DRY (EXCLUSIVE)		TOTAL AREA		GARDEN AREA	
			Sqmt.	Sqft.	Sqmt.	Sqft.	Sqmt.	Sqft.	Sqmt.	Sqft.	Sqmt.	Sqft.
01	101	3BHK-Pr	78.44	844.33	5.10	54.89	2.63	28.31	86.17	927	35.66	383.84
02	102	3BHK-Pr	78.44	844.33	5.10	54.89	2.63	28.31	86.17	927	-	-
03	103	2BHK-Pr-B	58.09	625.28	4.48	48.22	2.63	28.31	65.20	702	-	-
04	104		58.09	625.28	4.48	48.22	2.63	28.31	65.20	702	-	-
05	105	2BHK-Pr-A	58.13	625.71	4.40	47.36	2.63	28.31	65.16	702	-	-
06	106		58.13	625.71	4.40	47.36	2.63	28.31	65.16	702	-	-
07	107	3BHK-Lu-B	88.17	949.06	8.71	93.75	2.63	28.31	99.51	1071	-	-
08	108	3BHK-Lu-B	88.17	949.06	8.71	93.75	2.63	28.31	99.51	1071	30.69	330.35
09	109	2BHK-Pr-A	58.13	625.71	4.40	47.36	2.63	28.31	65.16	702	27.95	300.85



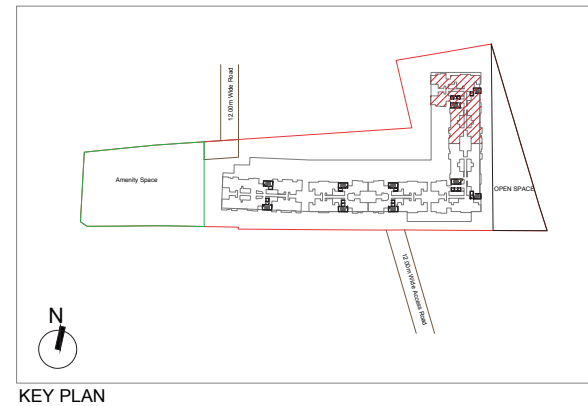
KEY PLAN

Tower - C2



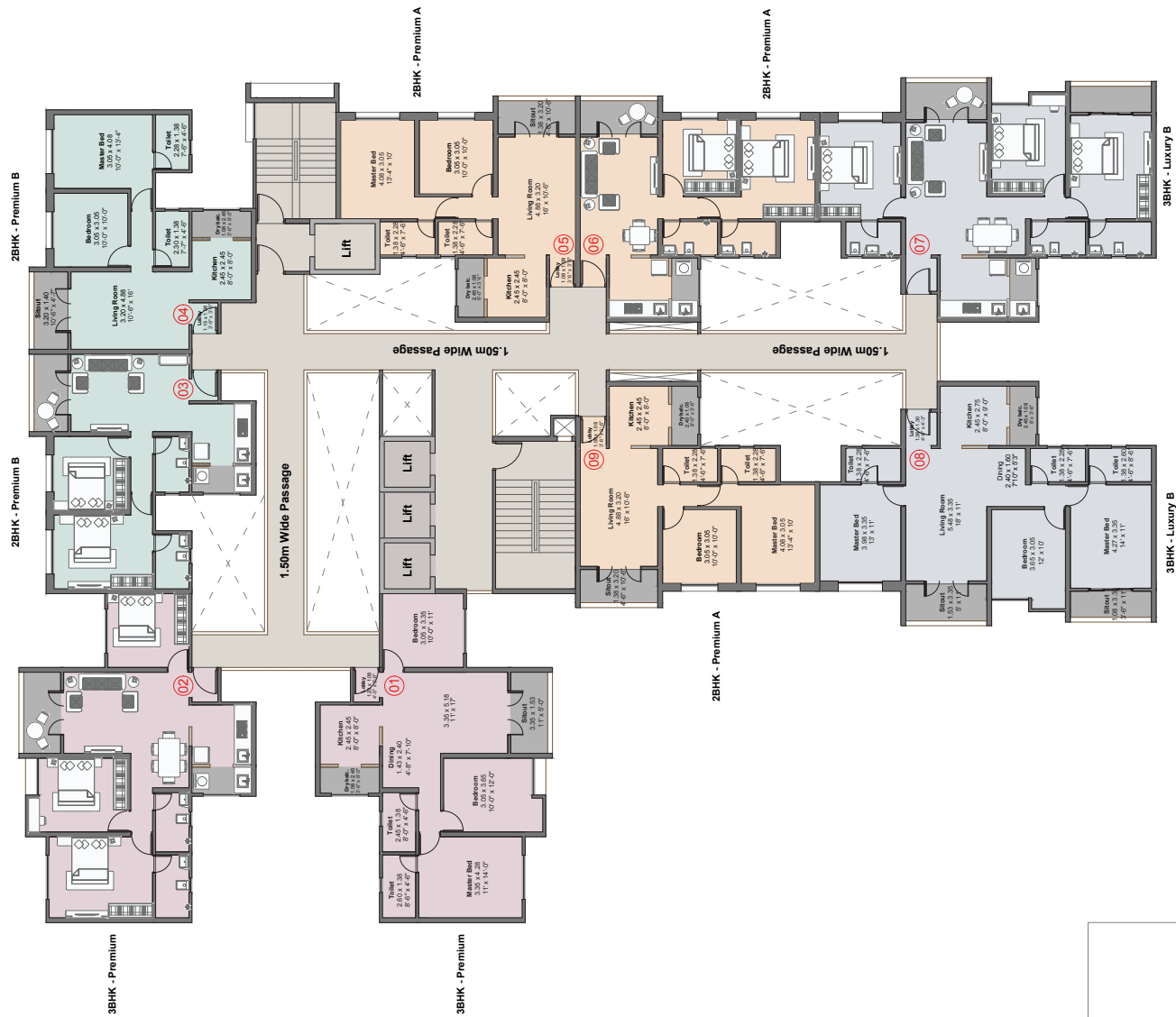
N
TOWER C2
REFUGE FLOOR PLAN

NO.	FLAT NO.	TYPE	CARPET AREA		BALCONY (EXCLUSIVE)		BALCONY DRY (EXCLUSIVE)		TOTAL AREA	
			Sqmt.	Sqft.	Sqmt.	Sqft.	Sqmt.	Sqft.	Sqmt.	Sqft.
01	601,1101,1601	3BHK-Pr	78.44	844.33	5.10	54.89	2.63	28.31	86.17	927
02	602,1102,1602	2BHK-Lu-B	67.55	727.11	5.10	54.89	2.63	28.31	75.28	810
03	603,1103,1603	2BHK-Pr-B	58.09	625.28	4.48	48.22	2.63	28.31	65.20	702
04	604,1104,1604									
05	605,1105,1605	2BHK-Pr-A	58.13	625.71	4.40	47.36	2.63	28.31	65.16	702
06	606,1106,1606									
09	609,1109,1609									
07	607,1107,1607	3BHK-Lu-B	88.17	949.06	8.71	93.75	2.63	28.31	99.51	1071
08										



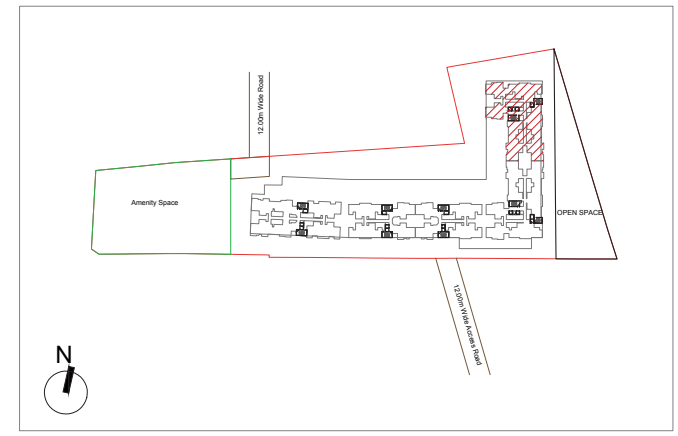
N
KEY PLAN

Tower - C2



TOWER C2
TYPICAL FLOOR PLAN

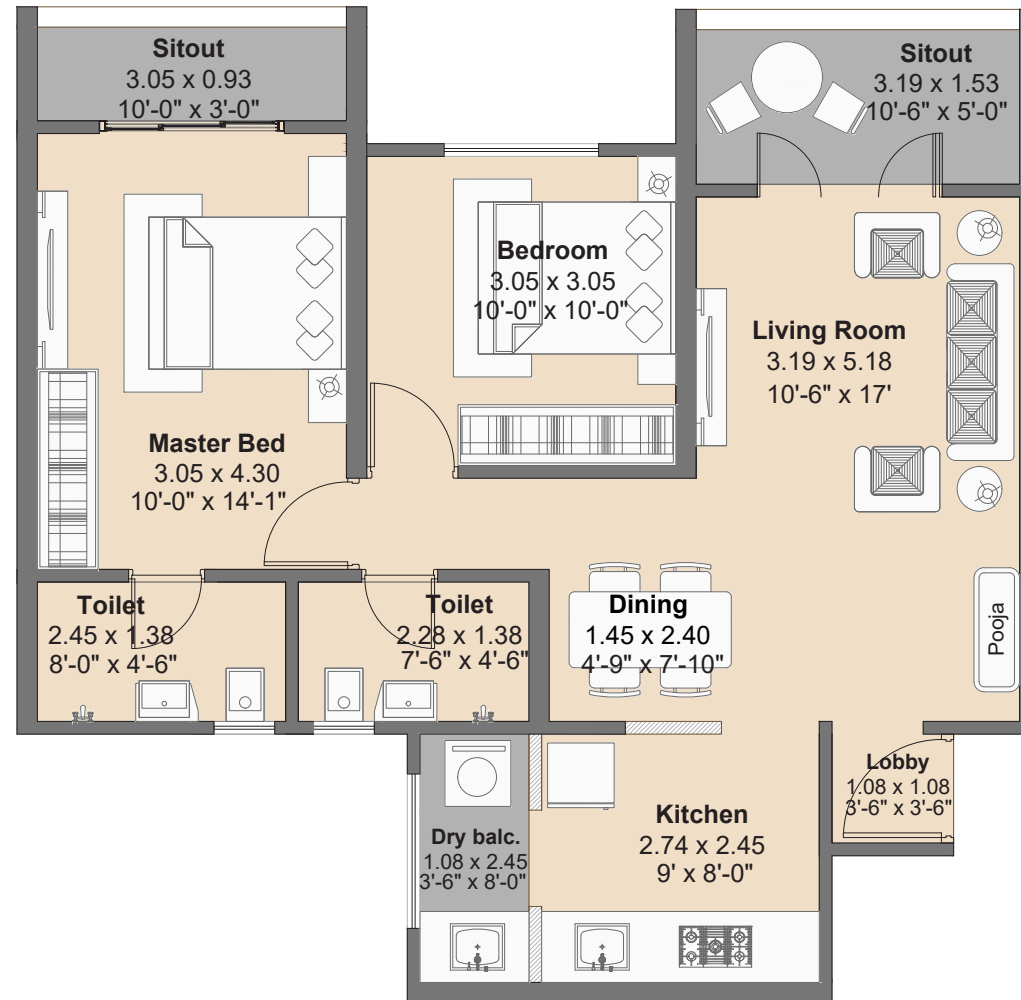
NO.	FLAT NO.	TYPE	CARPET AREA		BALCONY (EXCLUSIVE)		BALCONY DRY (EXCLUSIVE)		TOTAL AREA	
			Sqmt.	Sqft.	Sqmt.	Sqft.	Sqmt.	Sqft.	Sqmt.	Sqft.
01	201,301,401,501,701,801,901,1001,1201,1301,1401,1501,1701,1801,1901,2001	3BHK-Pr	78.44	844.33	5.10	54.89	2.63	28.31	86.17	927
02	202,302,402,502,702,802,902,1002,1202,1302,1402,1502,1702,1802,1902,2002									
03	203,303,403,503,703,803,903,1003,1203,1303,1403,1503,1703,1803,1903,2003	2BHK-Pr-B	58.09	625.28	4.48	48.22	2.63	28.31	65.20	702
04	204,304,404,504,704,804,904,1004,1204,1304,1404,1504,1704,1804,1904,2004									
05	205,305,405,505,705,805,905,1005,1205,1305,1405,1505,1705,1805,1905,2005	2BHK-Pr-A	58.13	625.71	4.40	47.36	2.63	28.31	65.16	702
06	206,306,406,506,706,806,906,1006,1206,1306,1406,1506,1706,1806,1906,2006									
09	209,309,409,509,709,809,909,1009,1209,1309,1409,1509,1709,1809,1909,2009									
07	207,307,407,507,707,807,907,1007,1207,1307,1407,1507,1707,1807,1907,2007	3BHK-Lu-B	88.17	949.06	8.71	93.75	2.63	28.31	99.51	1071
08	208,308,408,508,708,808,908,1008,1208,1308,1408,1508,1708,1808,1908,2008									



KEY PLAN

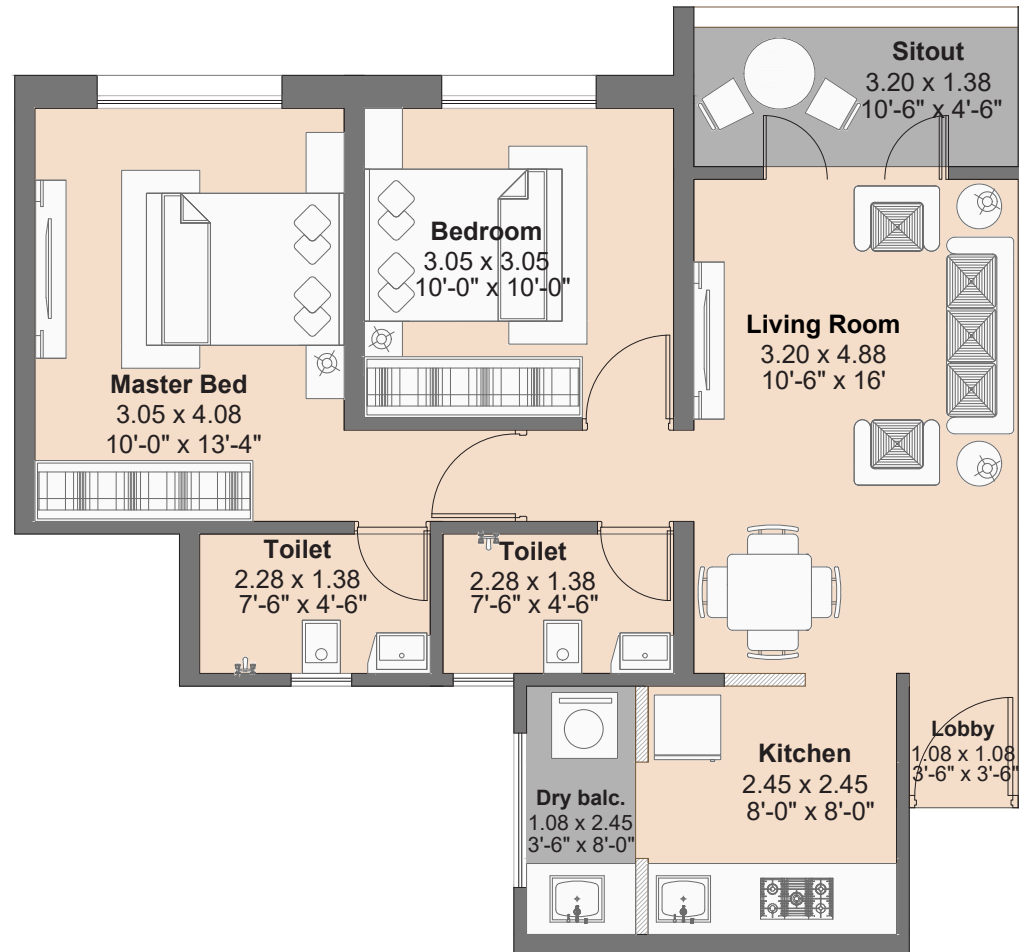
UNIT PLANS

2 BHK- Luxury-A



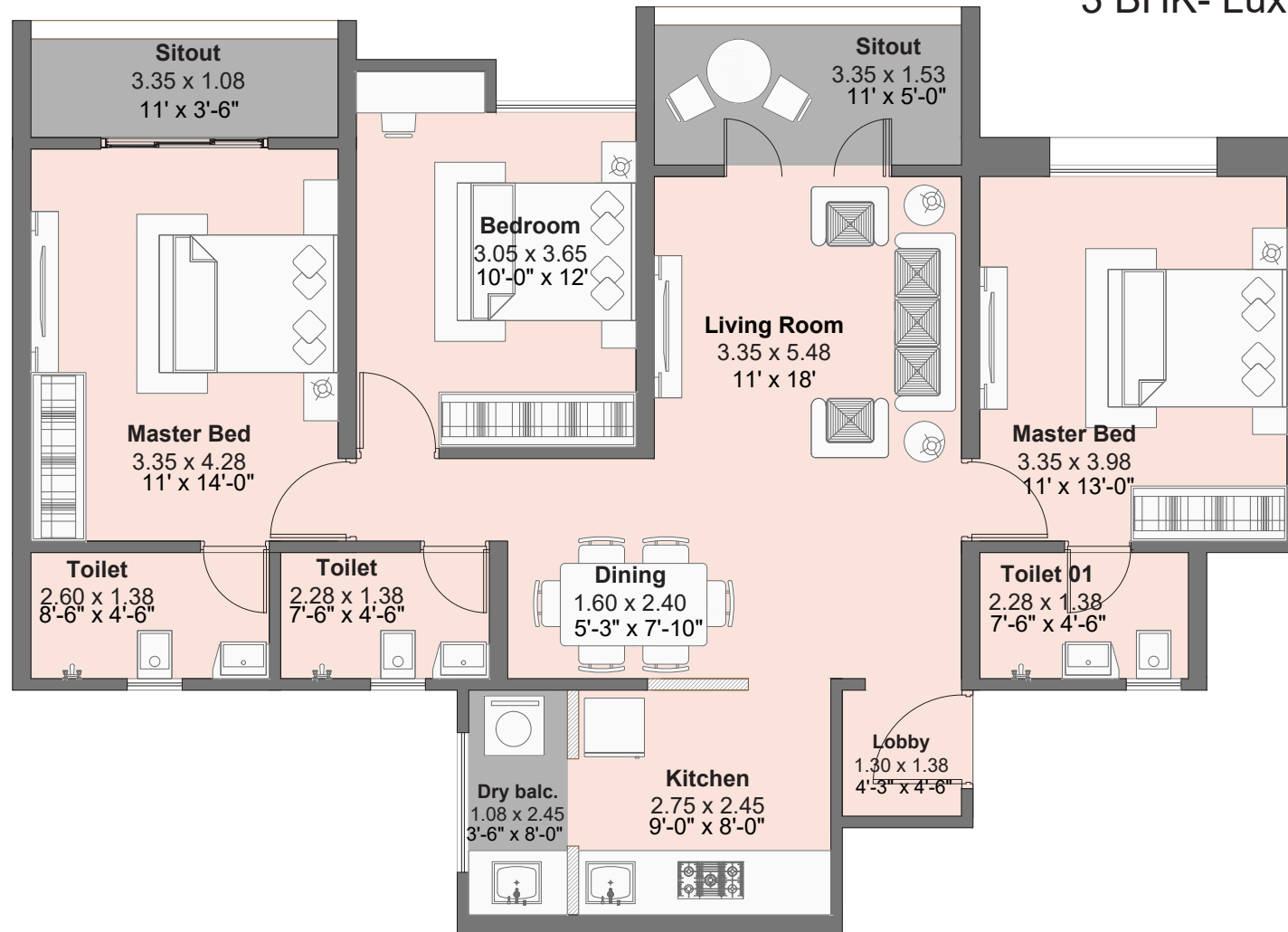
Type	Carpet Area		Balcony Area		Dry Balcony Area		Total Carpet Area	
	Sqm	Sqft	Sqm	Sqft	Sqm	Sqft	Sqm	Sqft
2 BHK- Luxury-A	63.23	680.61	7.68	82.67	2.63	28.31	73.54	792

2 BHK- Premium-A



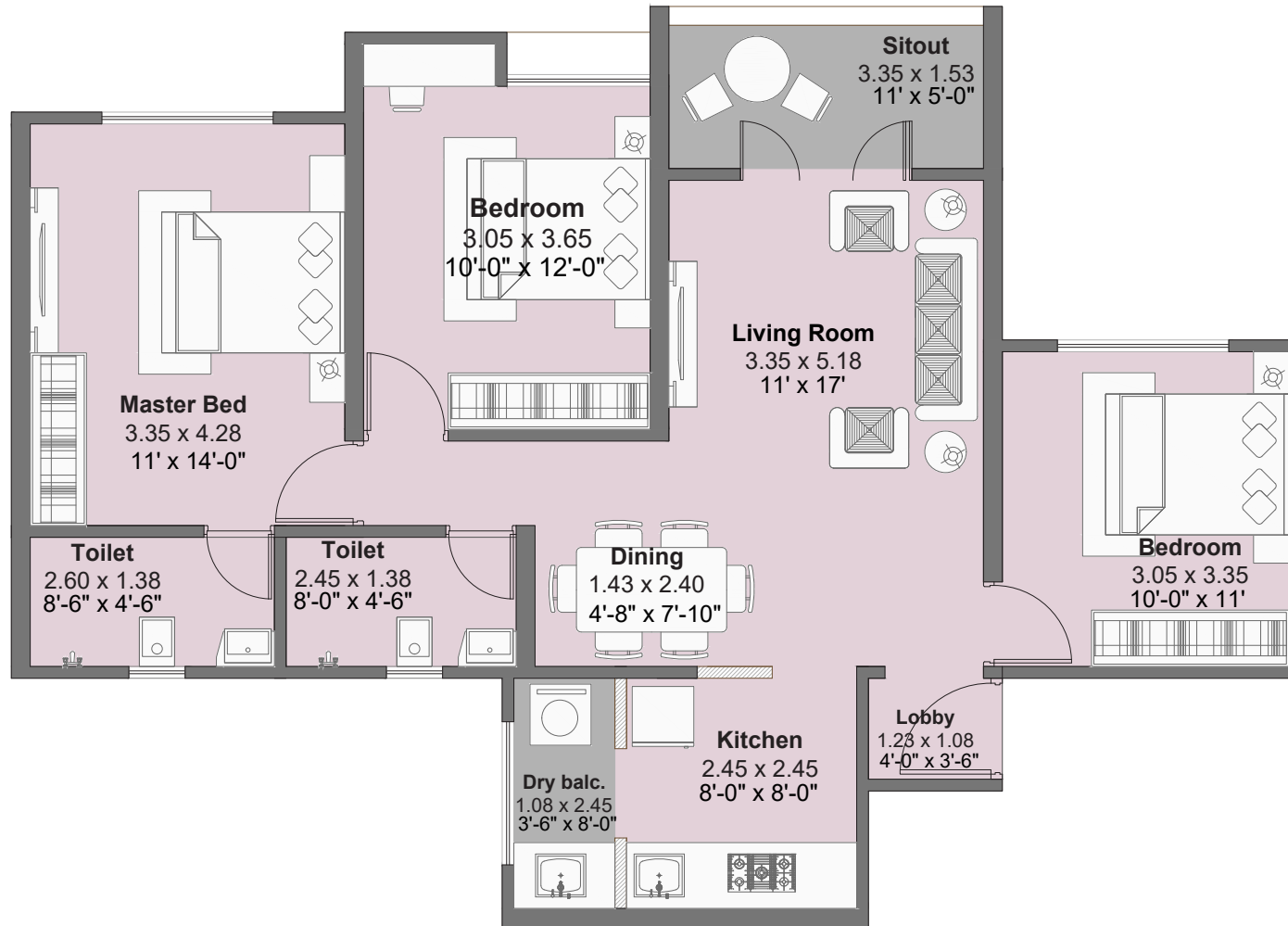
Type	Carpet Area		Balcony Area		Dry Balcony Area		Total Carpet Area	
	Sqm	Sqft	Sqm	Sqft	Sqm	Sqft	Sqm	Sqft
2 BHK- Premium-A	58.13	625.71	4.40	47.36	2.63	28.31	65.16	702

3 BHK- Luxury-A



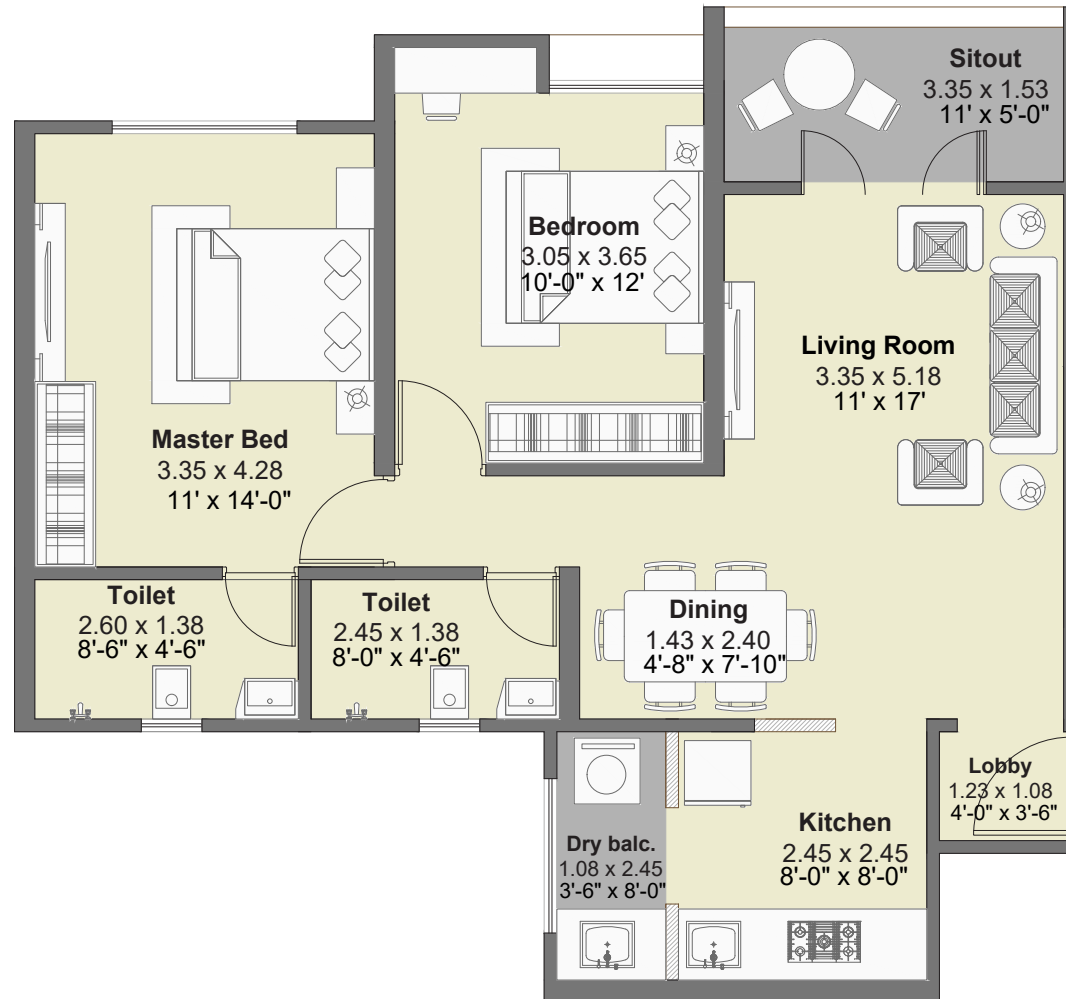
Type	Carpet Area		Balcony Area		Dry Balcony Area		Total Carpet Area	
	Sqm	Sqft	Sqm	Sqft	Sqm	Sqft	Sqm	Sqft
3 BHK- Luxury-A	88.18	949.16	8.71	93.75	2.63	28.31	99.52	1071

3 BHK- Premium



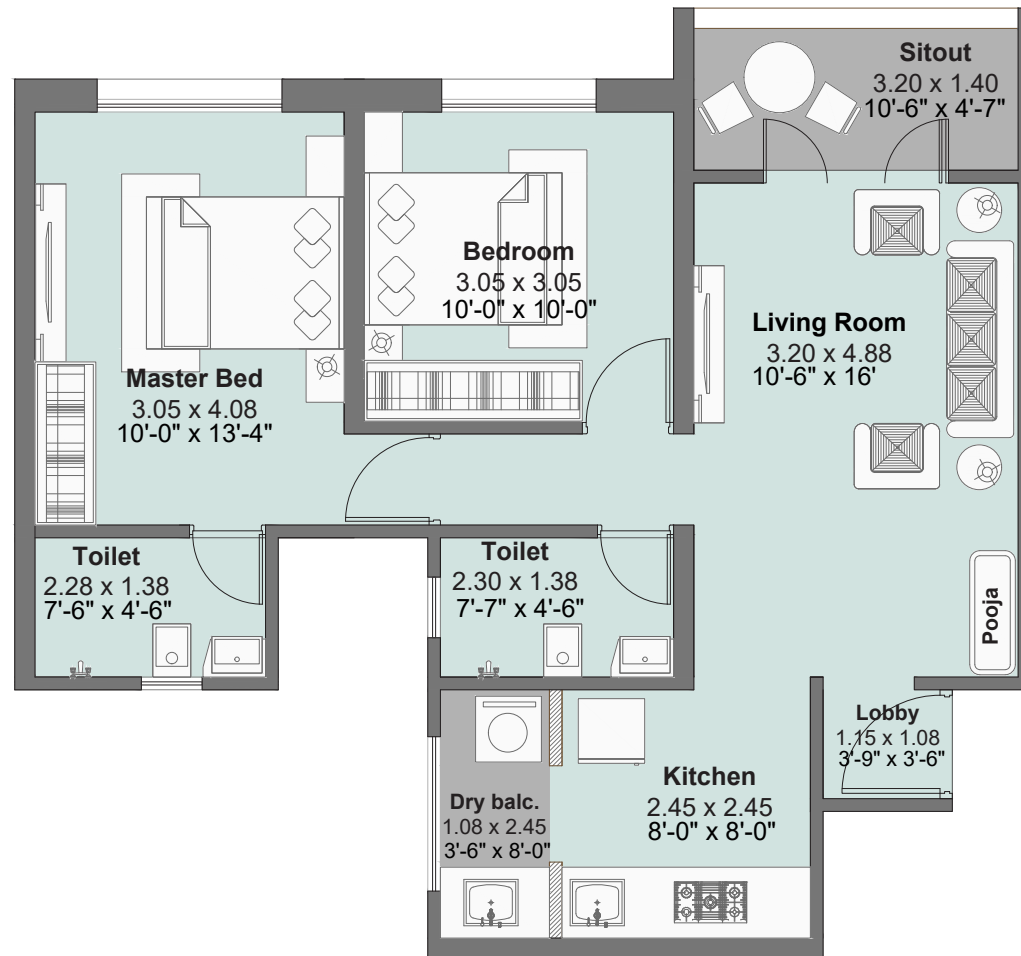
Type	Carpet Area		Balcony Area		Dry Balcony Area		Total Carpet Area	
	Sqm	Sqft	Sqm	Sqft	Sqm	Sqft	Sqm	Sqft
3 BHK- Premium	78.44	844.32	5.10	54.89	2.63	28.31	86.17	927

2 BHK- Luxury - B



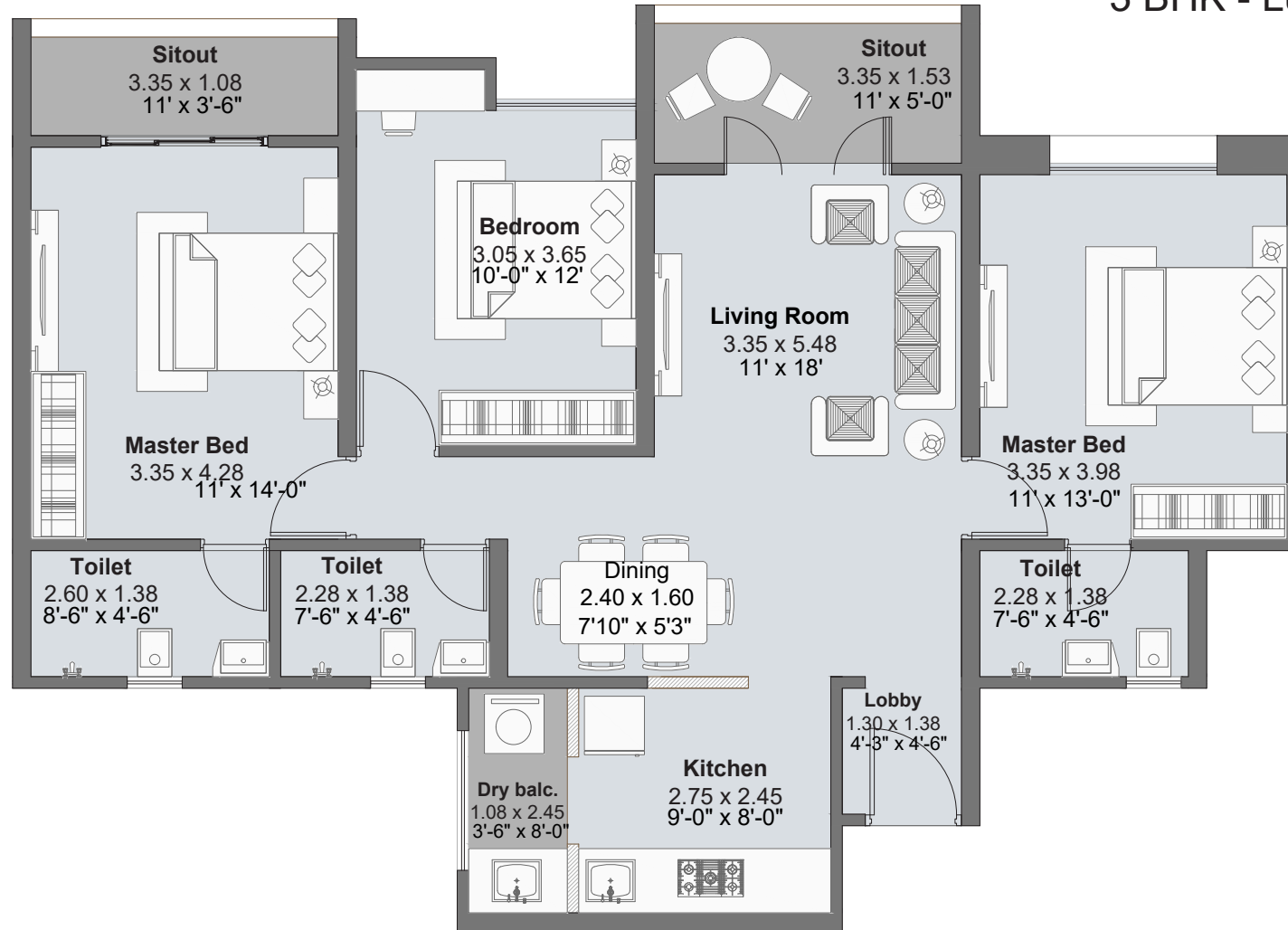
Type	Carpet Area		Balcony Area		Dry Balcony Area		Total Carpet Area	
	Sqm	Sqft	Sqm	Sqft	Sqm	Sqft	Sqm	Sqft
2 BHK- Luxury - B	67.55	727.11	5.10	54.89	2.63	28.31	75.28	810

2 BHK- Premium-B



Type	Carpet Area		Balcony Area		Dry Balcony Area		Total Carpet Area	
	Sqm	Sqft	Sqm	Sqft	Sqm	Sqft	Sqm	Sqft
2 BHK- Premium-B	58.09	625.28	4.48	48.22	2.63	28.31	65.20	702

3 BHK - Luxury - B



Type	Carpet Area		Balcony Area		Dry Balcony Area		Total Carpet Area	
	Sqm	Sqft	Sqm	Sqft	Sqm	Sqft	Sqm	Sqft
3 BHK- Luxury-B	88.17	949.06	8.71	93.75	2.63	28.31	99.51	1071



THE PULSE OF PUNE'S HAPPIEST FAMILIES

As a homebuyer you always seek a brand that delivers what it promises. Since inception, Kohinoor has always believed that there will be two distinct types of residential projects in Pune - regular homes and Kohinoor Homes. A Kohinoor home by definition will offer residences that are beyond comparison in quality, design and value. Which means, you can expect everything to be best-in-class in a Kohinoor home. Choose one today; build a Sada Sukhi future for generations.

OUR RESIDENTIAL PROJECTS

Sq. ft. Constructed Till Now - **9 MILLION SQ. FT.** | Sq. ft. Under Construction - **11 MILLION SQ. FT.**

COMPLETED PROJECTS:

- Kohinoor Shangrila - Phase 1, Pimpri
- Kohinoor Vyona, Pimpri
- Kohinoor Latis, Talegaon
- Kohinoor Falcon, Pashan-Sus Road
- Kohinoor Corner, Bopodi
- Kohinoor High Point, Model Colony
- S3 Lifestyle, Pimple Saudagar
- Princess Villa, Bhosari
- Air Castle, Ravet
- Kohinoor Jeeva, Bibvewadi
- Kohinoor Grandeur - Tower D, Ravet
- Kohinoor Emerald, Sus
- Kohinoor Coral, Hinjawadi Phase 3
- Kohinoor Tower, Pimpri
- Saheel Calysta, Wakad
- Shubhashree Phase 3, Akurdi
- Shubhashree Woods, Pimple Saudagar
- Kohinoor Reina, Kondhwa
- Kohinoor Sapphire 1, Tathawade
- Tinsel Town, Hinjawadi Phase 2
- Saheel Residency, Thergaon

UNDER CONSTRUCTION PROJECTS:

- Kohinoor Shangrila - Phase 2, Pimpri
- Sportsville by Kohinoor, Maan, Hinjawadi Ph 1
- Kohinoor Kaleido, New Kharadi
- Kohinoor Sapphire 2, Tathawade
- Kohinoor Viva City, Dhanori
- Kohinoor Sapphire 3, Tathawade
- Kohinoor Westview Reserve, New Wakad
- Abhimaan Township, Phase 3
- Kohinoor Presidentia, Sopan Baug Annexe
- Courtyard One, Wakad
- Kohinoor Famville, Hinjawadi Central (Ph 2)

*Data as of June 2023



Site Address:

Survey No. 284/3,
Maan, Mulshi, Pune - 411057.

Corporate Address:

Kohinoor Development Corporation, A-101/102,
ICC Trade Tower, S.B. Road, Pune - 411 016.

Call: 020-6764-1843 | **E-mail:** sales@kohinoorpune.com | **Website:** www.kohinoorpune.com



MahaRERA No
P52100051623



Disclaimer: The contents including images, text, graphics, etc. used in this brochure are solely for informational purposes and are not intended to constitute an offer or solicitation. All images which are not actual photographs are artist's impressions and are indicative of the project and spaces. No furniture/s or accessories shown in the visuals are provided with the unit/tenement/apartment. The company is not responsible for the consequences of any action taken by the viewer relying purely on the material/information provided in this brochure.